



TABLE OF CONTENTS

2007

OFFICIAL MEDIA GUIDE AND SOUVENIR MAGAZINE PUBLISHED BY



Professional Sports Publications
519 Eighth Ave.
New York, NY 10018
Tel (212) 697-1460
Fax (212) 286-8154

Executive V.P. Operations: Jeff Botwinick
Executive V.P. Business Development: Martin Lewis
Executive V.P. Sales: Steven Farkas
Executive V.P. Team Relations: Dave Gerschwer
Executive Administrative Director: Julie Wong
Production Manager: Erica Greenhouse
Managing Editor: Nora Santiago
Editorial Designer: Lynda DiTuri

© 2007 Professional Sports Publications. All rights reserved.
Reproduction in whole or part without permission of publisher is prohibited.

This Is ASU Baseball	2-3
Omaha	4
History in the Making	5
ICA Facilities	6
Packard Stadium	7
Baseball Facilities	8-9
Coaching Legends	10-11
Arizona State University	12

Life In the Valley	13
Academics	14-15
2007 Schedule	16-17
2007 Roster	18
TV/Radio Roster	19
2007 Outlook	20-21
Head Coach Pat Murphy.....	23-27
What They Are Saying	28
Assistant Coaches.....	29-31
Support Staff	32-37
President Michael Crow/VP Lisa Love	38
Two-Way Players.....	39
Q&A With ASU Baseball	40
Housing.....	41
Community Service.....	42
Players	44-67
Join the Club	68
NCAA Compliance	69
Sun Angel Foundation	70
Fundraising	71
2006 Review.....	73
2006 Results	74
2006 Statistics.....	75
2006 Awards/Honors	76
Pac-10 Review	77
Pro Stats	78
Alumni Involvement.....	79-80
Golden Spikes Award	81
Team USA	82

MLB Tradition	83-85
AFL/Futures Game	86
Devils and the Draft.....	87
Draft Since 1995.....	88
Year-by-Year Results	89
The Early Years	90
Honor Roll	91-93
Retired Numbers	94-95
ASU/College Baseball Hall of Fame	96
Postseason Play	97
ASU's National Champions	98-107
All-Time Lettermen	108-111
All-Time Lineups	112-113
Yearly Leaders	114
All-Time Record vs. Opponents.....	115
All-Time Results.....	116-121
The Streak	122
Single-Game Team Records	124-125
Individual Records	126-128
Pitching Superlatives	129
Career Records	130-131
Freshman Records	132-133
Attendance	134
Marketing	135
ASU Baseball A to Z.....	136-137
Media Coverage.....	138
Pac-10 Opponents	139-141
Non-Conference Opponents	142-143
Friends of the Program	144

ARIZONA STATE UNIVERSITY

Location	Tempe, Ariz.
Enrollment.....	63,278
Founded	1885
Nickname	Sun Devils
Colors	Maroon and Gold
Conference	Pacific-10
Home Field	Packard Stadium (3,879)
President	Michael Crow
Vice President for University Athletics	Lisa Love
Sr. Assoc. Athletic Director (SWA)	Dawn Rogers

Strength & Conditioning.....	Jim Mancuso (12th year)
Equipment Manager	John Bieber
Stadium Operations.....	Goose Gosewisch
Marketing and Research	Eric Habermas
Administrative Secretary	Vicki Asato
Office Assistant	Keli Murphy

A LOOK AT 2007

Letterwinners Returning/Lost	15/16
Position Starters Returning/Lost	8/4
Top Pitchers Returning/Lost.....	4/3
Total Newcomers	22

2006 IN REVIEW

2006 Record.....	37-21 (.638)
Home Record	26-6
Away/Neutral Record	11-15
2006 Pac-10 Record (Finish).....	14-10 (2nd)
Home Record	9-3
Away Record.....	5-7

ASU POSTSEASON HISTORY

NCAA Tournament Appearances.....	30
NCAA Tournament Record.....	138-60 (.697)
CWS Appearances.....	19
National Championships	5 (1981, '77, '69, '67, '65)
CWS Runner-Up Finishes	5
Last CWS Appearance	2005 (3rd)

College World Series Record	58-32 (.644)
Regional Titles.....	14
Last Time to Host Regional	2005 (Packard Stadium)

BASEBALL HISTORY

First Year of Baseball	1907 (7-2); 1959 (28-18)
Overall All-Time Record	2,437-1,200-6 (1907-P)
Early Record.....	333-345-5 (1907-58)
Modern Record	2,104-855-1 (1959-P)
Packard Stadium Record	894-257-1 (1974-P)
All-Time Pac-10 Record	446-333 (1979-P)

MEDIA RELATIONS

Assistant Director (Baseball Contact)	Randy Policar
Policar's E-Mail.....	randy.policar@asu.edu
Policar's Direct Line	(480) 965-6594
Asst. Baseball SID	Regina Verlengiere
Media Relations Address	Sports Information Office
.....	P.O. Box 872505
.....	Tempe, AZ 85287-2505
Media Relations Phone	(480) 965-6592
Media Relations Fax.....	(480) 965-5408
Press Box Phone.....	(480) 727-7253
ASU Athletic Website.....	www.TheSunDevils.com



The annual Arizona State Sun Devil Baseball Media Guide was edited and coordinated by Randy Policar, ASU Assistant Sports Information Director. The cover was designed and laid out by Alex Ryan. This media guide would not be possible without the help of ASU Baseball Director of Operations Graham Rossini, Steve Kirkman, Mark Brand, Doug Tammara, Kerry Howe, Steve Rodriguez, Nate Policar, Regina Verlengiere, Jen Jaekels, Kathy Alford, Stevan Mladenovic and Leslie Policar. Special writing credits to Bob Eger and Regina Verlengiere. **Photo Credits:** Alex Ryan, Jason Wise, Scott Troyanos, Scott Wachter, Rick Scuteri, Colleen Hayes, Jeff Golden, Chuck Conley, Mike Scully, Phoenix; J., Meric, Dan Donovan, St. Louis, Stephen Nowland/Rich Clarkson and Associates, Midland RockHounds, Mike Karlovec, Round Rock Express, West Michigan WhiteCaps, Bob Rinker, L. Scott Mann/PictureMann.com and all the other Major and Minor League Baseball clubs that have provided photos.



ASU BASEBALL 2007

The Tradition Continues



There comes a time in a little boy's life when baseball is introduced to him. Thus begins the long journey for those meant to play the game at a higher level, for those who love the game so much they strive to be a part of its history.

Sun Devil Baseball!!



NCAA NATIONAL CHAMPIONS: 1965, 1967, 1969, 1977, 1981



ROAD TO OMAHA

Arizona State Baseball has made a habit of going to Omaha and the College World Series. Since varsity baseball started in 1959, Sun Devil baseball has made 19 trips to Omaha and has won five national championships (1965, 1967, 1969, 1977 and 1981). Each year, the Sun Devil Baseball team is in the hunt for the national championship and looks to return "Back Home to Omaha."

NCAA BASEBALL CHAMPIONSHIPS

1.	USC	12
2.	Texas	6
3.	Arizona State	5
	LSU	5
5.	Miami (Fla.)	4
	Cal State Fullerton	4

All-Time CWS Wins

1.	Texas	78
2.	USC	74
3.	Arizona State	58
4.	Miami (Fla.)	46
5.	Oklahoma State	38
	Stanford	38

CWS Appearances:

1.	Texas	32
2.	Miami (Fla.)	22
3.	USC	21
4.	Arizona State	19
	Oklahoma State	19
6.	Florida State	18



HISTORY IN THE MAKING

- Two Top Three national finishes in the last nine years (1998, 2005).

- Arizona State has finished in the Top 12 of the national rankings five times in the past decade.

- In a ranking provided by BoydsWorld.com, the website dedicated to college baseball rankings and RPI, the Arizona State baseball program ranked #8 in the nation for sustained excellence over the past ten years. The ranking is a direct reflection of the strength of the program. The rankings are the result of a system of calculations designed to properly weigh a team's winning percentage and strength of schedule, while taking inter-regional play into account.

- The Sun Devils are coming off their seventh straight NCAA Tournament appearance and 30th overall. ASU is 248-119 since 2001.

- ASU and Arizona will again square off in the "Challenge at Chase," the second annual game played on the home field of the Arizona Diamondbacks, Chase Field. Arizona State will also play on the home field of the Houston Astros when they become the first Pac-10 team to participate in the Houston College Classic at Minute Maid Park.

- Arizona State's recruiting classes have been ranked nationally in the Top 12 in each of the past nine years, including the class that will debut in 2007.

- The Sun Devils have led the west coast in attendance in three of the past four years, including the number one ranking this past season. ASU was 19th nationally in 2006, averaging 2,748 fans per game.

- ASU has hit over .300 at the plate in 35 of 48 varsity baseball seasons, including a string of 19 straight years. The Sun Devils have led the Pac-10 in hitting in six of the past eight years, including the 2006 season. The Devils have hit a combined .327 during the 12 seasons Pat Murphy has been the head coach.

- Arizona State leads all NCAA schools with 343 all-time draft picks dating back to the inception of the MLB Amateur Draft in 1965. ASU also leads all schools with 90 draft picks over the past 12 years.

- During ASU's 48-year history of varsity baseball (1959-P), 94 different players have earned All-American honors. The program has also had 13 National Players of the Year and three Golden Spikes Award winners.





ATHLETIC FACILITIES

Arizona State University features world-class athletic facilities for its student-athletes, housed in the Nadine and Ed Carson Student-Athlete Center. The 165,000-square foot facility houses the entire athletic department and provides student-athletes with one of the finest athletic centers in the nation.



Wally Kelly Student-Athlete Lounge



Athletic Training Center



Nap & Barbara Lawrence Weight & Strength Center



Video Training Suite



Nathan & Betty Norris Quiet Study



APS Computing Learning Center



Hobbs Family Stadium Club



Lattie & Elva Coor Student-Athlete Study Lounge

WINKLES FIELD-PACKARD STADIUM AT BROCK BALLPARK



Winkles Field-Packard Stadium at Brock Ballpark, home of Arizona State baseball since 1974, is one of the nation's most beautiful collegiate ballparks. Known for its wonderful aesthetic features, the outfield wall is lined with palm trees, and just beyond the right-field fence is the award-winning Karsten Golf Course. In left field, sparkling Tempe Town Lake and the Tempe construction boom is visible. In the distance, the Superstition Mountains offer a picturesque backdrop. But for every bit of beauty that envelops the facility, there is an equal dose of tradition.

The facility is the home of two national championship teams and 14 NCAA regional tournaments. Arizona State's all-time record at Packard is 894-257-1, for a winning percentage of .776. Last season, ASU was 26-6 at home and over the last five seasons, ASU has won over 80% of its games at home.

MONSTER HOME RUNS

The following players are the only 18 in the history of Winkles Field-Packard Stadium at Brock Ballpark to hit a home run over the "Green Monster" in centerfield.

Dennis Haines, Arizona, 1974
 Kevin Romine, Arizona State, 1981
 Barry Bonds, Arizona State, 1983
 Louie Medina, Arizona State, 1984
 Romy Cucjen, Arizona State, 1984
 Tony Mattia, Arizona State, 1987
 Steve Willis, Arizona State, 1988
 Tim Griffin, Stanford, 1989
 Anthony Manahan, Arizona State, 1990
 Todd Stevenson, Arizona State, 1990
 Mike Kelly, Arizona State, 1990
 Doug Newstrom, Arizona State, 1993
 Antone Williamson, Arizona State 1993
 Tim DeCinces, UCLA, 1996
 Matt Meyer, Nebraska, 1996
 Dion Ruecker, Texas Tech, 1996
 Mitch Jones, Arizona State, 1999
 Brooks Conrad, Arizona State, 2000

STADIUM FIRSTS

Game: April 7, 1974 (USC 6, ASU 4)

Crowd: 4,637

ASU Pitcher: Dale Hrovat

Hit: Rich Dauer of USC in the first inning

Home Run: ASU's Clay Westlake vs. LaVerne, April 9, 1974

Dimensions of Packard are 338 feet down the lines, 368 feet in the power alleys and 395 to straightaway center. The fence is 10 feet high. Located five feet beyond the center-field wall is the "Green Monster," a 30-foot-high batting eye. Only 18 players have ever hit a home run over the Monster.

With a capacity of over 4,000, Packard has more than 3,000 permanent seats in the main grandstand. Field-level box seats are also available behind home plate. The remaining seats are located on popular grass berms, which run down the first-base and third-base line. Berm seating offers outstanding views of the game and provides fans with a different way to watch and enjoy the game.

The Packard Stadium press box, situated atop the grandstand directly behind home plate, includes booths for television and radio coverage, as well as ample space for print media. Improvements were made to the press facility over the last four years, when statistic monitors were added to the radio booths, high speed internet was installed and live stats were produced over the Internet from the press box.

In 1995, the Sports Turf Manager Association awarded groundskeeper Brian Johnson and Packard Stadium Field of the Year honors. In addition, a 2003 coaches survey published in *Baseball America* ranked ASU's baseball facilities among the Top 15 in the nation.

Over the years Packard has received numerous upgrades, including a practice infield (1997) and

indoor hitting facility (1998). The practice infield was donated by the Arizona Diamondbacks and offers a full size infield that is used for various defensive, bunting and baserunning drills. The 6,000 square foot hitting facility was provided by a private donation and includes 5 batting cages and a separate area for speed and movement exercises. A new Daktronics scoreboard was installed in left-center field in 1999 and is fully equipped for graphics, animation and messages on its matrix board.

Just before the 2003 season, ASU installed a brand new playing surface featuring major league quality drainage and irrigation systems. The playing surface consists of tiff green grass in the infield and Bermuda grass in the outfield. The dirt portion of the infield is crushed red brick, which can be found at many major league stadiums. The playing surface is annually referred to as one of the nation's best.

A new players' facility, opened in August 2004, includes a clubhouse and a state-of-the-art sports medicine facility. The clubhouse also includes a video room, study area and meeting room. Head Coach Pat Murphy also had an office constructed that is located on the terrace level of the new clubhouse.

Plans are currently underway for the completion of Winkles Field-Packard Stadium at Brock Ballpark and include the installation of chair back seating throughout the grandstand, the expansion and enclosure of the press box, installation of a shade canopy and alumni tributes located throughout the ballpark. A fundraising plan to secure the capital to complete these projects will be launched in the spring of 2007.

Packard's existence was made possible through a gift to Arizona State University from Guthrie and Peter Packard. Both are alumni of ASU, and the stadium is a tribute to their late father, William Guthrie Packard, a prominent member of the publishing industry for many years. Mr. Packard served the Shepard Company for 51 years, rising from sales representative to President to Chairman of the Board. He was also active in various community and church affairs in Colorado and Arizona.



BASEBALL FACILITIES



With major changes planned to enhance the fan experience (that include the installation of chair back seating, a shade canopy and press box expansion), ASU baseball has already made several multi-million dollar renovations and additions to the player facilities located at Winkles Field-Packard Stadium at Brock Ballpark. The student-athletes of Sun Devil Baseball are provided with the best all-around player facilities in the country and have several resources available on site to further enhance their develop and college experience.

PLAYING FIELD

One of the finest playing surfaces in the country and the envy of visitors year round. A brand new playing surface was installed just prior to the start of the 2003 season and is annually referred to as the best looking and playing surface in the country. The combination of Arizona weather and a full time grounds crew allow Sun Devil student-athletes the chance to maximize practice time on a natural surface year round.

CLUBHOUSE

The players' clubhouse was completed prior to the 2005 season and features a 1600 square-foot major league style clubhouse designed with 40 over-sized cherry wood lockers. The lockers were funded by pledges from alumni of the program and have a plaque identifying the player responsible for the donation located on the locker door. Student-athletes also enjoy a video room, study lounge, meeting room and 1000 square-foot sports medicine room inside the clubhouse. The sports medicine room is also home to the Tillman Room and features several areas that pay tribute to American heroes and Sun Devil Alumni Pat and Kevin Tillman.

The Omaha Room, located inside the clubhouse, features team pictures of the Sun Devils' five National Championship teams, as well as wall plaques listing the program's 19 College World Series appearances and members of the All-CWS team. All team meetings and press conferences take place in this area.



HITTING FACILITY

A 6,000 square-foot covered hitting facility was constructed in 1998 and is located off the left-field side of the ballpark. Student-athletes enjoy five full size hitting tunnels, access to various pitching machines and a conditioning area used for speed and movement exercises. The home bullpen area is also located off the east wall of the hitting facility.

The hitting facility is lit, equipped with a stereo system and features a key pad entry door that allows student-athletes the opportunity to use the hitting areas at their convenience on off-days or evenings. One of the hitting tunnels is set up with a switch activated pitching machine, enabling the student-athlete to perform most hitting drills featured in practice with only one person present in the cage.



PRACTICE INFIELD

Provided for by the Arizona Diamondbacks, a full size infield was installed adjacent to right field in 1997. Designed with the same specifications as the main infield, this area allows infielders, catchers, and pitchers room to perform various defensive, bunting or baserunning drills.

The field was originally installed so that the Arizona Diamondbacks could experiment with the grass blend that would become known as Bob Sod. After the grass testing was complete, the Diamondbacks graciously turned the field over to ASU.





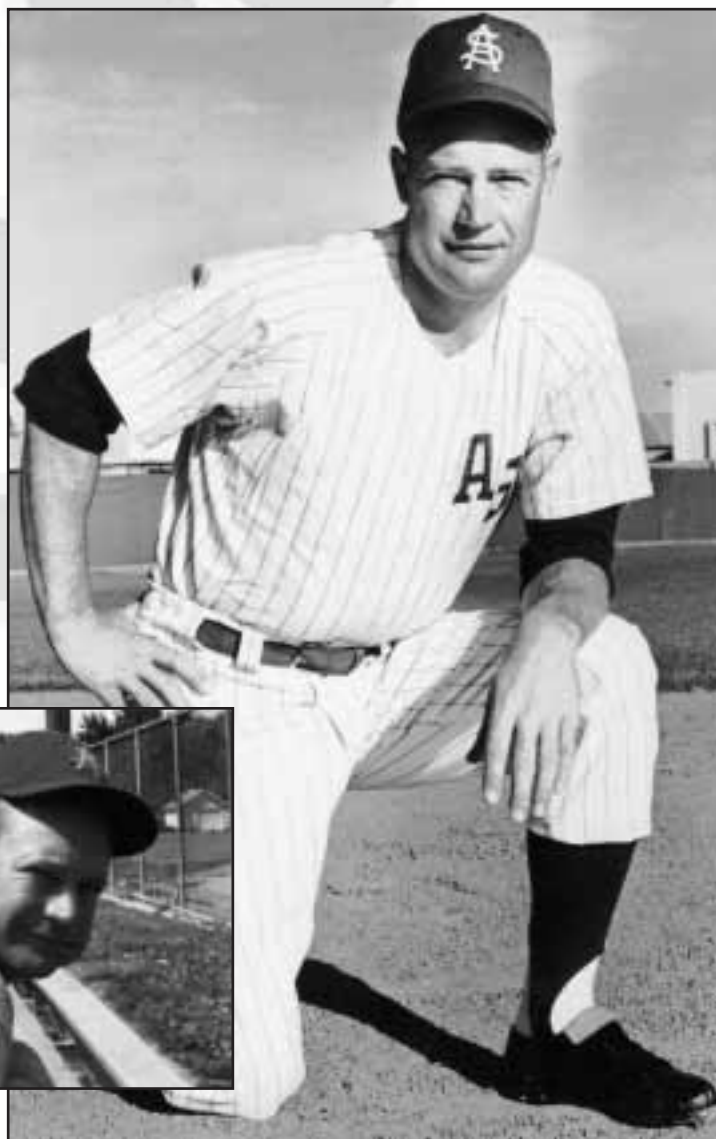
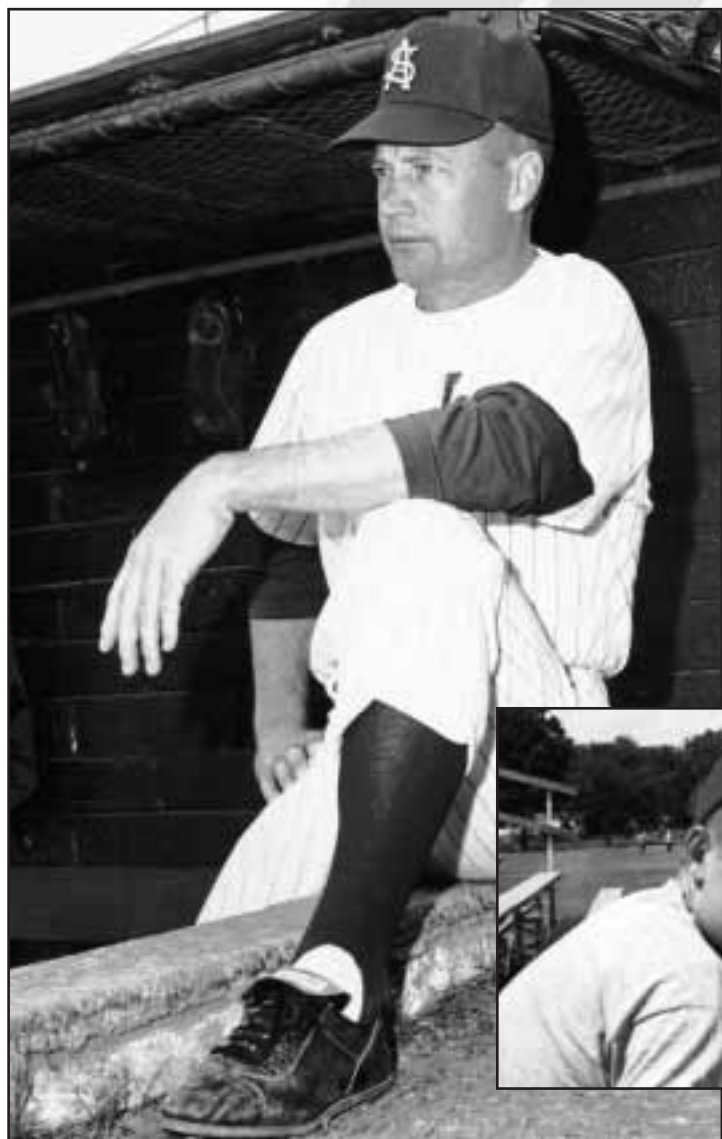
BOBBY WINKLES (1959-1971) *Coaching Legends*

Arizona State's first varsity baseball coach, Bobby Winkles laid the foundation for the legacy that has become Sun Devil Baseball. He guided the Sun Devils to a 524-173 record during his 13 years in Tempe, including three College World Series titles. He was named the 1965 and 1969 NCAA Coach of the Year and The Sporting News Coach of the Year in 1965, 1967 and 1969. After leaving ASU, Winkles managed four years in the Major Leagues with the California Angels and the Oakland

Athletics. He was inducted into the ABCA Hall of Fame in 1997 and was a member of the inaugural class inducted into the College Baseball Hall of Fame in 2006. Winkles coached several great players while he was at the helm of the Sun Devils, including Rick Monday (No. 1 overall pick in 1965 MLB Draft), Hall of Famer Reggie Jackson, Paul Ray Powell, Sterling Slaughter and Larry Gura. His No. 1 jersey is retired at Packard Stadium, where the field was named in his honor in 2001.

BY THE NUMBERS

Seasons at ASU:	13
Career Record:	524-173 (.752)
Conference Championships:	5 (WAC)
CWS Appearances:	4 (1964, 1965, 1967, 1969)
NCAA Championships:	3 (1965, 1967, 1969)
NCAA Coach of the Year:	2 (1965, 1969)
The Sporting News Coach of the Year:	3 (1965, 1967, 1969)



JIM BROCK (1972-1994)

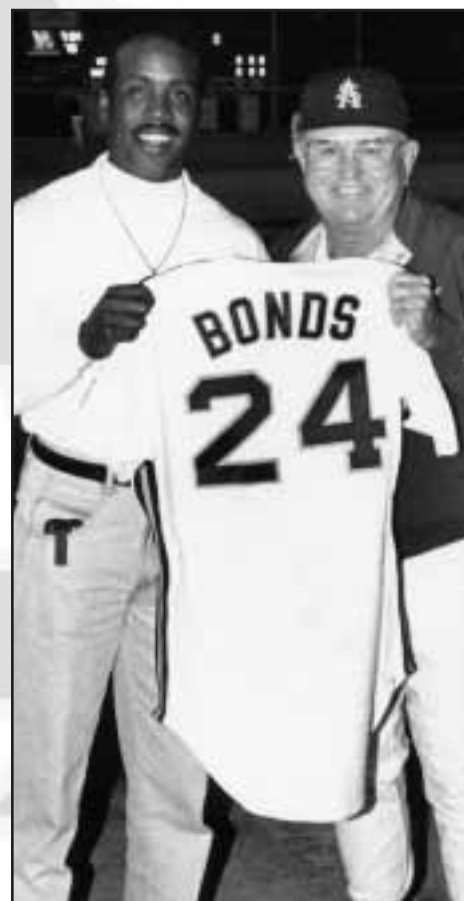
Coaching Legends

Arizona State's second of only three baseball coaches during the varsity history of the program, Jim Brock coached the Sun Devil nine from 1972 until his death in 1994. He recorded a 1,100-440 career record during his 23 seasons at Arizona State. He led ASU to 13 College World Series appearances, including winning a pair of national championships. Brock battled cancer throughout the 1994 season and passed away just days after the College World Series that year. Brock coached a handful of Sun Devil legends, including first round picks Eddie Bane, Floyd Bannister, Bob Horner, Hubie Brooks, Oddibe McDowell, Barry Bonds and

Mike Kelly. All three of ASU's Golden Spikes Award winners (Horner, McDowell, Kelly) played under Brock. He earned the National Coach of the Year Award in 1977 and 1981, *The Sporting News* Coach of the Year award in 1984 and the 1988 *Baseball America* Coach of the Year award. He was inducted into the ABCA Hall of Fame in 1998. Additionally, he was a five-time winner of the Pac-10 Coach of the Year Award. His No. 33 jersey is retired on the outfield wall of the baseball field, and his name was added to the facility name, Winkles Field-Packard Stadium at Brock Ballpark, during the 2006 Alumni Weekend.

BY THE NUMBERS

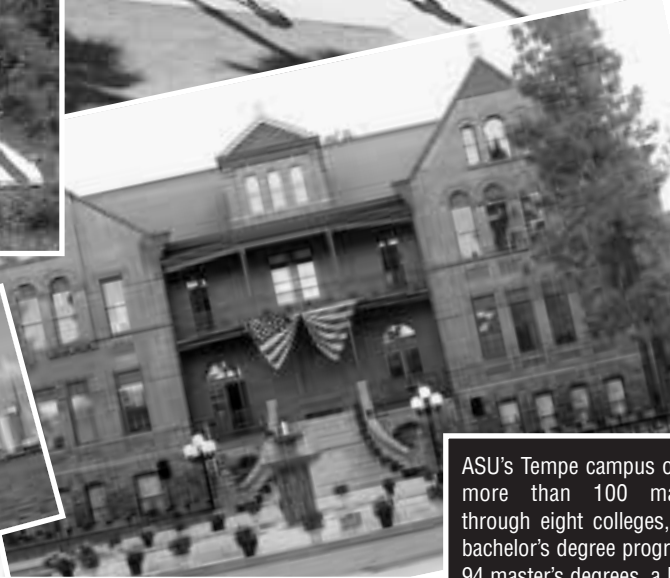
Seasons at ASU:	23
Career Record:	1,100-440 (.714)
Conference Championships:	11 (6 WAC, 5 Pac-10)
CWS Appearances:	13 (1972, 1973, 1975, 1976, 1977, 1978, 1981, 1983, 1984, 1987, 1988, 1993, 1994)
NCAA Championships:	2 (1977, 1981)
NCAA Coach of the Year:	2 (1977, 1981)
The Sporting News Coach of the Year:	1 (1984)
Baseball America Coach of the Year:	1 (1988)
Pacific Ten Coach of the Year:	5 (1981, 1982, 1984, 1988, 1993)





ARIZONA STATE UNIVERSITY

Arizona State University is listed as one of this year's "12 Hottest and Trendiest Colleges" in the 2004 "How to Get into College" guide published by *Kaplan* and *Newsweek*.



ASU's Tempe campus offers more than 100 majors through eight colleges, 104 bachelor's degree programs, 94 master's degrees, a highly regarded law degree and nearly 51 doctoral degrees.

The Arizona State Tempe campus is located on 722 acres in the heart of downtown Tempe and just minutes away from the busy activity of Mill Avenue. With its shady malls, cool fountains and lush plantings, Arizona State's campus has long been known as an "oasis in the desert."





LIFE IN THE VALLEY



With its spectacular desert landscaping and colorful sunsets, the Valley of Sun is home to 2.3 million people and is the vacation destination for 10 million people annually.



Tempe is home to the P.F. Chang's Rock 'N' Roll Marathon, which ends just outside Sun Devil Stadium.



Concerts and block parties are just part of the bustling nightlife of Mill Avenue, a restaurant district that is the center of activity in downtown Tempe.



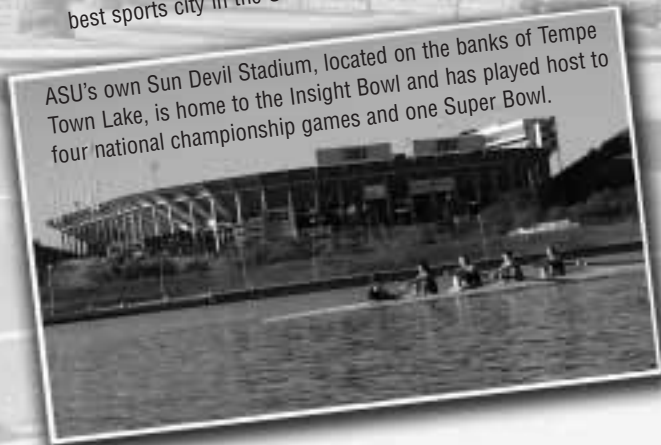
The Sporting News named Phoenix the fourth-best sports city in the United States in 2000.



The Phoenix sports scene includes the Suns of the NBA, the Mercury of the WNBA, the Coyotes of the NHL, the Cardinals of the NFL, the Rattlers of the Arena Football League and the 2001 World Champion Arizona Diamondbacks of MLB in addition to the hometown Arizona State Sun Devils.



ASU's own Sun Devil Stadium, located on the banks of Tempe Town Lake, is home to the Insight Bowl and has played host to four national championship games and one Super Bowl.



The Phoenix metropolitan area boasts over 325 days of sunshine each year with an average temperature of 85 degrees.



ACADEMICS



Senior Joe Persichina has twice been named to the Academic All-Pac-10 team.

- 19 members of the 2007 Sun Devil baseball team have a GPA of 2.5 or better after the fall semester.
- In 2006, 22 of the 35 student-athletes on the baseball team achieved a GPA of 2.5 or better.
- ASU has had five Academic All-Americans since 1999 and ranks eighth among major Division I programs for the most Academic All-Americans in the Pat Murphy era. With four First Team Academic All-Americans, ASU ranks tied for second during that period.
- Casey Myers (1998-2001) earned Academic All-American of the Year honors in both 2000 and 2001.
- For the sixth time in seven years, ASU has a student on USA Today's list of the nation's top 20 undergraduates. NO OTHER public university in the country has had as many students earn the award.
- The university's Honors College is at its largest enrollment (1,689), making it the most sought-after honors college in the country. The Honors College ranks in the top eight in the United States with a 100 percent acceptance rate to medical and law schools.
- ASU currently ranks sixth among public universities in the U.S. in its enrollment of freshmen merit scholars. In 1992, two merit scholars enrolled at ASU; in the past three years, 365 have enrolled.
- Eight ASU students have earned prestigious USA Today Academic First Team honors, the best record of ANY public university in the nation. Of all institutions, public and private, only Harvard and Yale have more.
- US News ranks ASU's Freshman Year Experience as of the nation's best!
- ASU ranks in the Top 20 in the United States since 1991 for Goldwater Scholars (math, science and engineering), and the Top 10 Marshall (academics and leadership), Truman (careers in public service), and Udall (environment) award winners.
- ASU is a Doctoral/Research-Extensive I Institution, the highest distinction per the prestigious Carnegie Foundation classification system.
- ASU's Main Campus offers more than 100 majors through eight colleges, 104 bachelor's degree programs, 94 master's degrees, a highly regarded law degree and nearly 50 doctoral degrees.
- Arizona State University was listed as of the "12 Hottest and Trendiest Colleges" in the 2003 "How To Get Into College" guide published by Kaplan and Newsweek.
- ASU was named one of the Top 25 universities for Hispanic students in the United States by Hispanic Magazine.
- In the fall of 2006, ASU Baseball earned a team GPA of 2.85. Under Pat Murphy, the baseball team GPA has steadily risen.
- The 2006 Sun Devil baseball team had 18 maroon & gold scholars, meaning they earned at least a 3.0 GPA.



ACADEMIC ALL-PAC 10 UNDER PAT MURPHY

- | | |
|---|--|
| 2006- Joe Persichina (2nd), Willy Fox (2nd) | 2001- Jon Switzer, Casey Myers, Ty Johnson, Jeff Phelps (2nd) |
| 2005- Travis Buck, Erik Averill, Tuffy Gosewisch (2nd), Ty Marotz (2nd), Seth Dhaenens (HM), Joe Persichina (HM), Eric Williams (HM) | 2000- Jon Switzer, Jeff Phelps, Casey Myers |
| 2004- Ryan McKenna, Garrett Schoenberger, Tuffy Gosewisch (2nd), Erik Averill (2nd) | 1999- Andrew Beinbrink, Willie Bloomquist, Mark Ernster, Casey Myers, Jeff Phelps (2nd) |
| 2003- Tuffy Gosewisch (HM), Bryce Kartler (HM), Nick Walsh (HM) | 1998- Willie Bloomquist, Jay Gehrke (2nd), Greg Halvorson (2nd), Richy Leon (2nd) |
| 2002- Ryan McKenna (2nd), Cesar Castillo (2nd), Aaron Klusman (2nd) | 1997- Phill Lowery, Dan McKinley, Greg Halvorson (2nd), Richy Leon (2nd), Kevin Tommasini (2nd) |
| | 1996- Kevin Tommasini (2nd) |

ACADEMICS

BRIAN RICHARDSON

Assistant Director, Office for Student Athlete Development



Brian Richardson is in his 7th year with the Office of Student Athlete Development. He currently serves as the Assistant Director of the unit and has also spent the last 6 years as the Academic Coach for Pat Murphy and the ASU Baseball program. Also known as known as "B Rich," Richardson is responsible for helping baseball student-athletes develop critical academic and life skills.

Richardson also oversees the academic

development programming for all student athletes, which includes First Year Experience transition programs, Tutoring, Study Hall and the Computer Lab.

Richardson has been working at ASU since 1990, serving in a variety of leadership roles in both student affairs and academic affairs. He arrived in the state of Arizona by way of Virginia, where he attended Virginia Wesleyan College before moving onto Virginia Commonwealth University where he completed his Masters degree in Education Administration. Brian and his wife Michelle, reside in Chandler, AZ.



Casey Myers was a standout for the Devils both on and off the field. Myers was twice named the Academic All-American of the Year, as well as the Pac-10 Player of the Year twice.

ACADEMIC SCHOOLS AT ASU

Architecture - Architecture, Interior Design

WP Carey School of Business - Undergraduate studies, The Supply Chain Management/Logistics, Accountancy, Information Management, Computer Information Systems, General Management, Management Information Systems, Business: Productions/Operations

College of Education - Top 20 - Graduate Programs in Education Psychology, Education Policy, Curriculum & Instruction, Higher Education Administration: This is significant as over 100 faculty members in the college of education are responsible for administering both the Undergraduate

and Graduate programs.

Engineering & Applied Sciences - Bioengineering/Biomedical Engineering, Computer Engineering, Industrial/Manufacturing

College of Fine Arts - Dance, Master of Fine Arts, Printmaking, Ceramics, Theatre for Youth, Art Education, School of Music, Playwriting, Photography

College of Liberal Arts - Chemistry, Exercise Science, Geology, Religious Studies, Speech and Hearing Sciences and Zoology

College of Public Programs - Radio/Television Studies, Journalism

ACADEMIC ALL-AMERICANS

1976- Brandt Humphry

1982- Alvin Davis

1991- Jim Henderson

1999- Mark Ernster, Casey Myers, Willie Bloomquist

2000- Casey Myers (Academic All-American of the Year)

2001- Casey Myers (Academic All-American of the Year)



2007 SCHEDULE

DAY	DATE	OPPONENT	SITE	TIME
Saturday	Jan. 27	Alumni Game (Exhibition)	Tempe, Ariz.	1 p.m.
Friday	Feb. 2	Southern Utah	Tempe, Ariz.	7 p.m.
Saturday	Feb. 3	Southern Utah	Tempe, Ariz.	1 p.m.
Sunday	Feb. 4	Southern Utah	Tempe, Ariz.	1 p.m.
Friday	Feb. 9	vs. Texas A&M^	Houston, Texas	3:30 p.m.
Saturday	Feb. 10	vs. Vanderbilt^	Houston, Texas	12 p.m.
Sunday	Feb. 11	at Houston^	Houston, Texas	11 a.m.
Thursday	Feb. 15	Missouri	Tempe, Ariz.	7 p.m.
Friday	Feb. 16	Missouri\$	Surprise, Ariz.	7 p.m.
Saturday	Feb. 17	Oregon State\$	Surprise, Ariz.	3 p.m.
Sunday	Feb. 18	Gonzaga\$	Surprise, Ariz.	2 p.m.
Friday	Feb. 23	UAB	Tempe, Ariz.	7 p.m.
Saturday	Feb. 24	UAB	Tempe, Ariz.	1 p.m.
Sunday	Feb. 25	UAB	Tempe, Ariz.	1 p.m.
Tuesday	Feb. 27	at Arizona	Tucson, Ariz.	4 p.m.
Friday	March 2	at Auburn	Auburn, Ala.	6 p.m.
Saturday	March 3	at Auburn	Auburn, Ala.	2 p.m.
Sunday	March 4	at Auburn	Auburn, Ala.	1:30 p.m.
Friday	March 9	Long Beach State	Tempe, Ariz.	7 p.m.
Saturday	March 10	Long Beach State	Tempe, Ariz.	1 p.m.
Sunday	March 11	Long Beach State	Tempe, Ariz.	1 p.m.
Tuesday	March 13	Kansas State	Tempe, Ariz.	7 p.m.
Wednesday	March 14	Kansas State	Tempe, Ariz.	7 p.m.
Friday	March 16	Maine	Tempe, Ariz.	7 p.m.
Saturday	March 17	Maine (DH)	Tempe, Ariz.	1 p.m.
Sunday	March 18	Maine	Tempe, Ariz.	1 p.m.
Friday	March 23	at USC*	Los Angeles, Calif.	7 p.m.
Saturday	March 24	at USC*	Los Angeles, Calif.	1:30 p.m.
Sunday	March 25	at USC*	Los Angeles, Calif.	1 p.m.
Wednesday	March 28	at Arizona%	Phoenix, Ariz.	6:40 p.m.
Friday	March 30	at Washington*	Seattle, Wash.	6:30 p.m.
Saturday	March 31	at Washington*	Seattle, Wash.	2 p.m.
Sunday	April 1	at Washington*	Seattle, Wash.	1 p.m.
Thursday	April 5	Stanford*	Tempe, Ariz.	7 p.m.
Friday	April 6	Stanford*	Tempe, Ariz.	7 p.m.
Saturday	April 7	Stanford*	Tempe, Ariz.	1 p.m.
Friday	April 13	Washington State*	Tempe, Ariz.	7 p.m.
Saturday	April 14	Washington State*	Tempe, Ariz.	6 p.m.
Sunday	April 15	Washington State*	Tempe, Ariz.	12 p.m.
Friday	April 20	Louisiana-Lafayette	Tempe, Ariz.	7 p.m.
Saturday	April 21	Louisiana-Lafayette	Tempe, Ariz.	6 p.m.
Sunday	April 22	Louisiana-Lafayette	Tempe, Ariz.	1 p.m.
Wednesday	April 25	Hawai'i	Tempe, Ariz.	7 p.m.
Friday	April 27	at California*	Berkeley, Calif.	2:30 p.m.
Saturday	April 28	at California*	Berkeley, Calif.	1 p.m.
Sunday	April 29	at California*	Berkeley, Calif.	1 p.m.
Friday	May 11	UCLA*	Tempe, Ariz.	7 p.m.
Saturday	May 12	UCLA*	Tempe, Ariz.	6 p.m.
Sunday	May 13	UCLA*	Tempe, Ariz.	1 p.m.
Wednesday	May 16	Utah Valley State	Tempe, Ariz.	6 p.m.
Friday	May 18	at Oregon State*	Corvallis, Ore.	5 p.m.
Saturday	May 19	at Oregon State*	Corvallis, Ore.	1 p.m.
Sunday	May 20	at Oregon State*	Corvallis, Ore.	1 p.m.
Wednesday	May 23	Arizona*	Tempe, Ariz.	7 p.m.
Thursday	May 24	Arizona*	Tempe, Ariz.	7 p.m.
Friday	May 25	Arizona*	Tempe, Ariz.	1 p.m.
Fri-Mon	June 1-4	NCAA Regionals	16 sites/4 teams each	
Fri-Mon	June 8-11	Super Regionals	8 sites/2 teams each	
Fri-Mon	June 15-25	College World Series	Omaha, Neb. (Rosenblatt Stadium)	

* - Pac-10 Conference Game
^ - Houston College Classic

\$ - 5th Annual Coca-Cola Classic
% - Challenge at Chase



2007 HOUSTON COLLEGE CLASSIC MINUTE MAID PARK, HOUSTON, TEXAS

FEBRUARY 9-11, 2007

**ARIZONA STATE, BAYLOR, HOUSTON,
RICE, TEXAS A&M, VANDERBILT**

FRIDAY FEBRUARY 9

Vanderbilt vs. Rice, 12 p.m.

Texas A&M vs. Arizona State, 3:30 p.m.

Baylor vs. Houston, 7 p.m.

SATURDAY FEBRUARY 10

Vanderbilt vs. Arizona State, 12 p.m.

Texas A&M vs. Houston, 3:30 p.m.

Baylor vs. Rice, 7 p.m.

SUNDAY FEBRUARY 11

Arizona State vs. Houston, 11 a.m.

Baylor vs. Vanderbilt, 2:30 p.m.

Texas A&M vs. Rice, 6 p.m.



5TH ANNUAL COCA-COLA CLASSIC SURPRISE STADIUM, SURPRISE, ARIZ.

**FEBRUARY 16-18, 2007
ARIZONA STATE, GONZAGA,
MISSOURI, OREGON STATE**

FRIDAY FEBRUARY 16

Oregon State vs. Gonzaga, 3 p.m.

Arizona State vs. Missouri, 7 p.m.

SATURDAY FEBRUARY 17

Missouri vs. Gonzaga, 11 a.m.

Arizona State vs. Oregon State, 3 p.m.

SUNDAY FEBRUARY 18

Oregon State vs. Missouri, 9:45 a.m.

Arizona State vs. Gonzaga, 2 p.m.

All Game Times Listed Are Local To Site

SCHEDULE

At ASU, we take pride in playing one of the toughest schedules in the nation. Our scheduling philosophy comes with the belief that if you want to become the best, you must first compete against the best. In addition to playing in one of the nation's top baseball conferences, the Pac-10, ASU has played the following schools in regular season, non-conference action since the 2002 season: Auburn, Baylor, Cal-St Fullerton, East Carolina, Houston, Florida State, Long Beach State, LSU, North Carolina, Oklahoma, Oklahoma State, Rice, South Alabama, Tennessee, Texas, Texas Tech, Tulane and Wichita State. In 2007, ASU will also play Texas A&M and Vanderbilt for the first time in recent years.

The following is a list of professional ballparks that ASU has played in dating back to the 2002 season:

Chase Field (Phoenix, AZ) —

Home of the Arizona Diamondbacks

Minute Maid Park (Houston, TX) —

Home of the Houston Astros

Isotopes Park (Albuquerque, NM) —

*Home of the AAA Albuquerque Isotopes
(Florida Marlins)*

SBC Bricktown Ballpark (Oklahoma City, OK) —

*Home of the AAA Oklahoma Redhawks
(Texas Rangers)*

Rosenblatt Stadium (Omaha, NE) —

*Home of the AAA Omaha Royals
(Kansas City Royals)*

Whataburger Field (Corpus Christi, TX) —

*Home of the AA Corpus Christi Hooks
(Houston Astros)*

Tempe Diablo Stadium (Tempe, AZ) —

*Spring Training Home of the Los Angeles
Angels of Anaheim*

Surprise Stadium (Surprise, AZ) —

*Spring Training Home of the Texas Rangers &
Kansas City Royals*

Hohokam Park (Mesa, AZ) —

Spring Training Home of the Chicago Cubs

"Anyone that steps foot onto ASU knows the schedule will be tough. I looked forward to the challenge and knew that playing tough teams early would prepare us for the entire season. There were no easy games so there was no room to coast in our preseason workouts. We came out on opening day with the right focus and mentality and let the tough non-conference schedule prepare us for the Pac-10 season and postseason."

— Current Los Angeles Dodgers
outfielder Andre Ethier

EAST VALLEY BRIEFS

ASU baseball again to face nation's best

FROM STAFF REPORTS

The Arizona State baseball team will play national powers Long Beach State, Texas A&M, Vanderbilt, Auburn and Houston in non-conference games this season.



"When you play the best and beat them, you become one of them. If you're not challenging yourself or your team then you won't be prepared later in the season. Playing a tough schedule always made us better. There is nothing but positives that come out of playing the top competition in the country."

— Current Boston Red Sox
infielder
Dustin Pedroia



**ASU's strength of
schedule is
consistently
ranked among the
national Top 10.**



2007 ROSTER

POSITION ROSTER:

No.	PITCHERS	POS.	B/T	HT.	WT.	YR./EXP.	Hometown (High School/Last School)
4	Parigi, Joey	LHP	L/L	6-0	175	So./TR	Monterey, Calif. (Monterey/U. Texas)
8	Leake, Mike	RHP/OF	R/R	6-0	160	Fr./HS	Fallbrook, Calif. (Fallbrook)
25	Urlaub, Jeff	LHP	L/L	6-1	155	So./1V	Scottsdale, Ariz. (Horizon)
31	Mueller, Scott^	RHP	R/R	6-2	200	Jr./TR	Glendale, Ariz. (Greenway/South Mtn. CC)
34	Flores, Brian^	LHP	L/L	5-10	190	Jr./TR	Carlsbad, NM (Carlsbad/New Mexico JC)
35	Davis, Brett^	LHP	L/L	5-11	170	Jr./TR	Elk City, Okla. (Elk City/Seward County CC)
40	Bailey, Adam	LHP	L/L	6-0	185	Fr./HS	Scottsdale, Ariz. (Chaparral)
41	Satow, Josh^	LHP	L/L	5-9	150	Jr./2V	Scottsdale, Ariz. (Desert Mountain)
43	Brader, Dustin^	RHP	R/R	6-4	220	Jr./TR	Selah, Wash. (Selah/South Mtn. CC)
45	Mitchell, Jason	RHP	R/R	6-3	175	Fr./HS	Phoenix, Ariz. (Mountain Pointe)
47	Olvey, Derik^#	RHP	R/R	6-2	220	Sr./TR	Pelham, Ala. (Pelham/LSU)
49	Hatasaki, Joe	LHP	L/L	5-10	175	Fr./HS	Mountain View, Calif. (Mountain View)
50	Rafferty, Tommy^#	RHP	R/R	6-1	175	Sr./TR	Crawford, Texas (Crawford/Angelo State)
59	Aust, Ted^	RHP	R/R	5-11	210	Sr./TR*	Phoenix, Ariz. (Brophy Prep/Villanova)
62	Trink, Matt^	RHP	R/R	6-1	165	Sr./1V	Scottsdale, Ariz. (Horizon/Yavapai CC)
77	Jarvis, Jason	RHP/OF	R/R	6-2	195	Fr./HS	Scottsdale, Ariz. (Chaparral)
No.	CATCHERS	POS.	B/T	HT.	WT.	YR./EXP.	Hometown (High School/Last School)
2	Retherford, CJ^	C/IF/RHP	R/R	5-11	190	Sr./1V	Chandler, Ariz. (Hamilton/South Mtn. CC)
13	Paramore, Petey	C	B/R	6-2	210	So./1V	Allen, Texas (Allen)
22	Roling, Kiel	C	R/R	6-3	240	So./TR	Grand Junction, Colo. (Central/Central Arizona)
56	Bordes, Greg^	C/3B	R/R	5-9	160	So./1V*	Mesa, Ariz. (Dobson)
No.	INFIELDERS	POS.	B/T	HT.	WT.	YR./EXP.	Hometown (High School/Last School)
12	Romine, Andrew^	SS	B/R	6-2	180	Jr./2V	Lake Forest, Calif. (Trabuco Hills)
15	Persichina, Joe^	UTL	L/R	6-0	185	Sr./3V	Rolling Hills Estates, Calif. (Peninsula)
20	Hall, Matt	3B	R/R	6-3	180	So./1V	Scottsdale, Ariz. (Horizon)
23	Wallace, Brett	1B	L/R	6-1	245	So./1V	Sonoma, Calif. (Justin-Siena)
28	Sogard, Eric^	2B	L/R	5-10	180	Jr./2V	Phoenix, Ariz. (Thunderbird)
29	Torrez, Raoul	UTL	R/R	5-10	180	Fr./HS	Phoenix, Ariz. (Brophy Prep)
32	Hoechlin, Tyler	UTL	L/R	6-0	175	Fr./HS	Corona, Calif. (Santiago)
37	Williams, Kyle	2B/SS	B/R	5-10	180	Fr./HS	Scottsdale, Ariz. (Chaparral)
51	Van Meter, Joe#	UTL	R/R	6-2	195	Fr./HS	Long Island, NY (St. Dominic)
No.	OUTFIELDERS	POS.	B/T	HT.	WT.	YR./EXP.	Hometown (High School/Last School)
3	Sontag, Ryan^	OF	L/L	5-10	195	Jr./1V	Monroe, Mich. (Jefferson/Michigan State)
26	Laguna, Rocky^	OF	L/R	6-0	175	Jr./2V*	Yuma, Ariz. (Kofa)
30	Smith, Tim^	OF	L/L	6-2	220	Jr./TR	Toronto, Ontario (Birchmount Park/Midland College)
36	Petello, Mike#	OF	R/R	5-11	185	Fr./HS	Scottsdale, Ariz. (Saguaro)
39	Davis, Ike	OF/LHP	L/L	6-5	210	So./1V	Scottsdale, Ariz. (Chaparral)
48	Jones, Mike	OF	R/R	6-5	200	So./1V*	Sugarland, Texas (Fort Bend Austin)
55	Bogany, Jarred	OF	R/R	6-2	210	So./TR	Houston, Texas (George Bush/LSU)
57	Spencer, Matt^	OF/LHP	L/L	6-4	225	Jr./TR	Morristown, Tenn. (Morristown West/North Carolina)

* - Has utilized redshirt year

- Scheduled to redshirt in 2007

^ - Draft eligible in 2007

COACHING/SUPPORT:

Head Coach: 42 - Pat Murphy (13th year)

Assistant Head Coach: 10 - Tim Esmay^ (7th year)

Assistant Coaches:

11 - Turtle Thomas (1st year)

17 - Andy Stankiewicz (1st year)

Director of Baseball Operations: Graham Rossini^ (8th year)

Operations and Video Assistant: Steve Kirkman^ (9th year)

Graduate Managers: Jeff Mousser^ (3rd year)

Mikel Moreno^ (2nd year)

&- indicates ASU alum

Managers: Michael Collins^ (1st year)

Brendan Cunningham (1st year)

Sports Medicine/Rehabilitation: Kenny McCarty (10th year)

Strength and Conditioning: Jim Mancuso^ (12th year)

Ballpark Operations: Goose Gosewisch (1st year)

Marketing and Research Coordinator: Eric Habermas (1st year)

Media Relations: Randy Policar^ (2nd year)

Administrative Secretary: Vicki Asato^ (1st year)

Office Assistant: Keli Murphy^ (2nd year)

NUMERICAL ROSTER:

2	CJ Retherford, C/IF/RHP
3	Ryan Sontag, OF
4	Joey Parigi, LHP
8	Mike Leake, RHP/OF
12	Andrew Romine, SS
13	Petey Paramore, C
15	Joe Persichina, UTL
20	Matt Hall, 3B
22	Kiel Roling, C
23	Brett Wallace, 1B
25	Jeff Urlaub, LHP
26	Rocky Laguna, OF
28	Eric Sogard, 2B
29	Raoul Torrez, UTL
30	Tim Smith, OF
31	Scott Mueller, RHP
32	Tyler Hoechlin, UTL
34	Brian Flores, LHP
35	Brett Davis, LHP
36	Mike Petello, OF
37	Kyle Williams, 2B/SS
39	Ike Davis, OF/LHP
40	Adam Bailey, LHP
41	Josh Satow, LHP
43	Dustin Brader, RHP
45	Jason Mitchell, RHP
47	Derik Olvey, RHP
48	Mike Jones, OF
49	Joe Hatasaki, LHP
50	Tommy Rafferty, RHP
51	Joe Van Meter, UTL
55	Jarred Bogany, OF
56	Greg Bordes, C/3B
57	Matt Spencer, OF/LHP
59	Ted Aust, RHP
62	Matt Trink, RHP
77	Jason Jarvis, RHP/OF

BY POSITION:

Catchers	4
Pitchers	19
Infielders	11
Outfielders	10

*players with multi-positions included

BY CLASS:

Seniors	6
Juniors	11
Sophomores	10
Freshmen	10

BATTING:

Lefties	16
Righties	18
Switch	3

PITCHING:

Righties	10
Lefties	9

BY STATE:

Arizona	17
California	7
Texas	4
Alabama	1
Colorado	1
Michigan	1
New Mexico	1
New York	1
Oklahoma	1
Tennessee	1
Washington	1
Ontario (Canada)	1

2007 TV/RADIO ROSTER



2 CJ Retherford C/IF/RHP



3 Ryan Sontag OF



4 Joey Parigi LHP



8 Mike Leake RHP/OF



12 Andrew Romine SS



13 Petey Paramore C



15 Joe Persichina UTL



20 Matt Hall 3B



22 Kiel Roling C



23 Brett Wallace 1B



25 Jeff Urlaub LHP



26 Rocky Laguna OF



28 Eric Sogard 2B



29 Raoul Torrez UTL



30 Tim Smith OF



31 Scott Mueller RHP



32 Tyler Hoechlin UTL



34 Brian Flores LHP



35 Brett Davis LHP



36 Mike Petello OF



37 Kyle Williams 2B/SS



39 Ike Davis OF/LHP



40 Adam Bailey LHP



41 Josh Satow LHP



43 Dustin Brader RHP



45 Jason Mitchell RHP



47 Derik Olvey RHP



48 Mike Jones OF



49 Joe Hatasaki LHP



50 Tommy Rafferty RHP



51 Joe Van Meter UTL



55 Jarred Bogany OF



56 Greg Bordes C/3B



59 Ted Aust RHP



62 Matt Trink RHP



77 Jason Jarvis RHP/OF

COACHES

Pat Murphy
HEAD COACHTim Esmay
ASSISTANT HEAD COACHTurtle Thomas
ASSISTANT COACHAndy Stankiewicz
ASSISTANT COACH



2007 OUTLOOK

Few athletic programs in the state of Arizona share the same tradition of excellence as the Arizona State Sun Devil baseball program. Year in and year out, ASU wins consistently, despite constant changes in the landscape of college baseball and the emergence of several new programs in the top 25 rankings. Entering 2007 with a young and exciting team, the only Valley sports program with two top-three finishes in the last nine seasons (1998 and 2005) finds themselves searching for that ultimate prize — the program's sixth national championship.

Several members of the 2007 team gained valuable experience playing as freshmen in 2006 and give 13th year Head Coach Pat Murphy a solid nucleus to build around this season. Of the 15 returning letterwinners, seven finished the 2006 season as starters. Add in 22 talented newcomers and the Sun Devils could have a recipe for success.

"We're just trying to stir the soup," says Murphy. "We'll try to find the right ingredients to be the best program around, and I think we have the personnel in place to make that happen."

Ranked for 21 consecutive years in the annual *Baseball America* preseason poll (longest current streak in the country), the Sun Devils are expected to contend for the Pac-10 crown and make the program's 20th trip to Omaha and the College World Series. Few people would welcome the yearly pressure that comes with coaching at a top-ten college baseball program, but Coach Pat Murphy welcomes the challenge.

"We will not live down to expectations," said Murphy. "We'd like to do something remarkable and will prepare our student-athletes to do just that."

Being a top flight program, ASU must deal with the loss of talent every year. Eight Sun Devils from last season's team are gone to professional baseball, led by Colin Curtis, who was selected in the fourth round of the 2006 MLB draft by the New York Yankees. And while the outgoing players must be replaced, the 22 newcomers feature impact players that will be expected to contribute immediately.



The 2007 Sun Devils feature a 37-man roster with six seniors, 11 juniors, ten sophomores and ten freshmen. ASU will be led by Preseason All-American junior 2B Eric Sogard, sophomore OF/LHP Ike Davis, sophomore 1B Brett Wallace and junior LHP Josh Satow.

"Coaching is a privilege," said Murphy, "but as anyone that has ever had the chance to enjoy it knows, young people must mature and learn the game."

"Every year is a new opportunity and my main goal in 2007 is for these guys to realize their possibilities. I'm excited to get things started and see where the journey takes us."

THE SCHEDULE

ASU is known around the country and well-respected for always playing a challenging schedule. 2007 will be no exception, as once again, the Sun Devils will face a difficult non-conference slate.

"We play in the toughest conference in the nation, the Pac-10," said Murphy. "In order to prepare for the rigors of the Pac-10 season, we feel like

we should play the best available competition out of conference."

The Sun Devils will do that right out of the gate, as they travel to Houston, Texas for the Houston College Classic during the second weekend of play (Feb. 9-11). ASU will face Texas A&M, Vanderbilt and Houston at Minute Maid Park, home of the major league Houston Astros. Arizona State will become the first Pac-10 team to ever play in the prestigious tournament, which is known for featuring crowds as large as 25,000 fans. The Sun Devils will also travel to Auburn, Alabama to face the SEC's Auburn Tigers in what is widely regarded as the finest college baseball ballpark in America, Plainsman Park.

Eight teams that advanced to last season's NCAA Tournament in 2006 grace the schedule this season. ASU will face traditional powers Long Beach State, Hawai'i and Texas A&M, among others. The Sun Devils will also face seven teams ranked in the preseason Top 40, including four Pac-10 rivals. Annually one of the toughest conferences in the nation, the Pac-10 will once again feature several talented schools.

"There are no free passes in the Pac-10, you have to come to play everyday," said Murphy. "Last year's National Champion, Oregon State, came from our conference, Stanford and USC are perennial powers, and UCLA is coming off an NCAA tournament appearance and has a lot of excitement surrounding their program. Washington State, Cal and Washington are all much improved, as is Arizona. In this conference, every game will be a dogfight."

WHO RETURNS

Fifteen members of last season's team return to the Devils in 2007. Headlining the returners is junior

Joe Persichina



Jeff Urlaub



Josh Satow



Eric Sogard



CJ Retherford



Andrew Romine



second baseman Eric Sogard. Sogard, a preseason All-American, had a breakout 2006, batting .353 with nine home runs and 50 RBI. He was named an All-American and All-Pac-10 selection following his sophomore season.

"Sogard really came on last year," said Murphy. "We didn't know what to expect from him at the start of the year, but he really took advantage of an opportunity to play and has flourished ever since."

The 2006 Pac-10 Freshman of the Year, Ike Davis, begins his sophomore season looking to build on his historic debut season in Tempe. Davis established a new school freshman record with his 65 runs batted in during 2006, becoming the first freshman to ever lead the Pac-10 conference in RBI during the regular season. The First Team All-Pac-10 member hit .329 with nine home runs and also pitched in 14 games. He begins 2007 as the Sun Devils right-fielder.

"Ike is only beginning to reach his potential as a baseball player," Murphy said of Davis. "He certainly showed last year what he can do at the plate, and we think the more he matures and learns the game, the better he will become."

Fellow sophomores Brett Wallace (1B) and Petey Paramore (C) also had standout freshmen years that they will look to build upon in 2007. Wallace led the team with his .371 average while Paramore earned Freshman All-American and First Team All-Pac-10 honors for his work both at and behind the plate.

SS Andrew Romine wasn't expected to play a game in 2006 because of complications that resulted from a preseason blood clot, but ended up being a key part of the Sun Devils lineup by the end of the season. Romine hit .375 in the 22 games he appeared in, driving in 13 runs and scoring 12 times.

"What Andrew Romine did last year was both amazing and inspirational," said Murphy. "Here's a kid who goes through major surgery just before the season, isn't expected to play at all, and becomes a major contributor to us down the stretch and into the NCAA Tournament. He is the consummate team guy and a great young man."

Sophomore Matt Hall will begin the season at 3B and has been very impressive in preseason workouts. Senior Joe Persichina provides the Sun Devils with the most game experience on the current roster and is able to play all four infield positions.

Sophomore two-sport athlete Mike Jones has

shed his shoulder pads for batting gloves and will look to build upon his late season surge as the 2007 season begins. Despite missing part of the baseball season to participate in spring football practice, Jones was one of the Sun Devils hottest players down the stretch in 2006 and is expected to begin the 2007 campaign in centerfield.

Other returning position players include CJ Retherford, who played five positions in 2006, sophomore catcher/infielder Greg Bordes, who red-shirted last season, and junior outfielders Ryan Sontag and Rocky Laguna.

Only three pitchers return in 2007, led by junior lefty Josh Satow. A crafty lefty with exceptional control, Satow had a breakout sophomore campaign and will compete for a spot in the weekend rotation to start the season. Sophomore LHP Jeff Urlaub began 2006 as hot as any pitcher in the conference before coming down with mononucleosis in March. Urlaub's health has returned, and he will be counted on to fill one of the Sun Devils starting or long relief roles in 2007. Senior RHP Matt Trink also returns and will pitch primarily out of the bullpen.

THE NEWCOMERS

Another decorated recruiting class is set to make an impact in Tempe in 2007. Left-handed pitcher Brian Flores, a junior transfer from New Mexico Junior College, will compete immediately for a spot in the weekend rotation. Flores comes to ASU as a highly decorated junior college pitcher, having won the NJCAA Male Athlete of the Year Award following his sophomore season. He went 27-3 as a starter at NMJC, including a perfect game and two no-hitters. He helped lead New Mexico JC to a National Title in 2005.

Outfielder Tim Smith also comes to ASU with high expectations after a successful junior college career. Originally from Toronto, Smith comes to ASU from Midland College in Midland, Texas, where he hit a combined .459, including 59 extra base hits and 41 stolen bases.

LHP Joey Parigi was heavily recruited by ASU out of high school in Monterey, California, but chose to attend the University of Texas in 2006 before transferring to ASU in 2007. Parigi was one of the Longhorns top relievers last season and gives the Sun Devils valuable big game experience and will compete for a spot in the weekend rotation to start the season.

Catcher Kiel Roling was a member of ASU's fall signing class and originally expected to not arrive on campus until the fall of 2007. After deciding to enroll at ASU over the winter break, Roling brings a big right-handed bat to the lineup and will see action behind the plate as part of a sophomore catching tandem with the returning Petey Paramore.

Other transfers expected to contribute are RHP Ted Aust, RHP Scott Mueller, LHP Brett Davis, RHP Dustin Brader, LSU transfer Jarred Bogany and University of North Carolina transfer Matt Spencer OF/LHP. Spencer was a member of the national runner-up Tarheels last season and combines an attractive combination of speed and power. Bogany is a talent both in the field and at the plate and should make a push for a starting position.

A very talented freshman class is led by RHP/OF Mike Leake, who was a 7th round pick of the Oakland A's in last summer's MLB Draft. Leake is expected to be a major part of the Sun Devil pitching rotation, but will also see time in the outfield at some point this season.

"Mike Leake is a very special, game-changing type of player," said Murphy. "We are extremely excited about the future this young man has at Arizona State and for the contributions he'll make as a freshman."

Another freshman who will play a major role is utility man Raoul Torrez.

"Raoul really understands and lives the Sun Devil way," said Murphy. "It's hard to quantify what a player like him brings, but it is so important to the team. Although uncommon for a first year player, Raoul's leadership skills will have an impact on our team this season."

Leake and Torrez are joined by fellow freshmen LHP Adam Bailey, RHP Jason Mitchell, LHP Joe Hatasaki, OF Kyle Williams, IF Joe Van Meter, IF Tyler Hoechlin, OF Mike Petello and RHP/OF Jason Jarvis. Bailey, Mitchell, Jarvis and Hatasaki will compete for innings out of the bullpen. Williams is another two-sport athlete that will see time in the outfield after doubling as a wide-receiver on the Sun Devil football team this past fall. Hoechlin is well known for his acting work on TV's *7th Heaven*, but also a talented baseball player that will get the chance to contribute early in 2007. Petello and Van Meter are expected to redshirt in 2007. Two other Sun Devils, RHP's Derik Olvey and Tommy Rafferty will redshirt this season because of NCAA transfer rules.

EXPECTATIONS

"We know what the expectation is here and we've been working towards that goal each day leading up to the season," said Murphy. "Every single player that puts on the uniform realizes what a special place this is and wants to leave a mark on the rich tradition our program enjoys. I'm not big into predictions, but I do know that our team will play the game with a passion, attitude and commitment to team unrivaled by other programs in the country. I'm excited to get it started!"

CONTRACTORS BUILDING FOR THE FUTURE OF ASU

Sound Solutions, Superior Service

SPEEDIE AND ASSOCIATES



- Geotechnical
- Environmental
- Materials Testing

Phoenix 602-987-6381 Flagstaff 928-526-6881 Show Low 928-532-7773 Tucson 520-514-9411

PCI
PERFORMANCE CONTRACTING, INC.

INTERIOR DIVISION
1020 W. Ranch Road, Suite 104
Tempe, AZ 85284



Phone: 480-753-6033
Fax: 480-753-6068
Mobile: 602-763-2445
E-Mail: harry.scott@pcg.com

Harry J. Scott
Branch Manager



Hook Engineering, Inc.
Civil Engineers • Surveyors

MICHAEL E. HOOK, P.E.
Principal

3221 N. 24TH STREET, SUITE 10
PHOENIX, ARIZONA 85016
(602) 954-0166 • FAX (602) 956-0289 • CELL (602) 549-5603
mikeh@hookengineering.com



F. RODGERS
SPECIALTY CONTRACTOR, INC.
Thermal Insulation & Specialty Contractor
CONTRACTOR LIC. 172887, 172888, 172889

5325 S. KYRENE ROAD, STE. 106, TEMPE, AZ 85283 • WWW.FRODGERS.COM

Travis Oplinger
Branch Manager
office: (480) 820-8898
fax: (480) 820-6656
mobile: (602) 757-5646
ccuevas@frodgers.com


Glassline

Connie Knight
602.390.3149
connie@azglassline.com

5065 N. 54th Ave., Suite 10
Glendale, AZ 85301
p: 623.435.2679
f: 623.435.7310
www.azglassline.com

Gilbane
Building More Than BuildingsSM

Gilbane is proud to help ASU build the
New American University



ISTB-1

Interdisciplinary Science and Technology Building-1
College of Liberal Arts & Sciences Multiple Renovations
Child Development Center Psychology Renovations
Mass Spectrometry Lab – Phasees 1 and 2
Physical Science C-Wing Yarger Laboratory
Social Science Phase 2 Renovations
School of Human Evolution & Social Change Renovation
Psychology Building 3rd Floor Renovations
Physical Science D-Wing 3rd Floor Renovations

Living/Learning Dining Renovations
Memorial Union
Palo Verde Main
Manzanita Hall

For more information contact Bob Harper
602.553.4750 or rharper@gilbaneco.com


Quality Work
Dedicated Teamwork
Efficient Project Delivery

As a design-build general contractor, we deliver
quality construction services to clients in the
heavy civil, mining, and transportation industries.

Visit us at www.amesconstruction.com

A

Ames Construction, Inc.
3410 East University, Suite 380
Phoenix, AZ 85034
602-431-2111
AZ ROC Lic# 074995-002A



PAT MURPHY

Head Coach

Pat Murphy became only the third head coach in Arizona State's modern baseball history when he was hired in August of 1994. Following in the footsteps of legendary head coaches Bobby Winkles and Jim Brock, Murphy's 12-year tenure at the helm of the ASU program has been marked with great success. Since inheriting the Sun Devil program, Murphy has carefully nurtured the tradition of excellence in Tempe, at the same time establishing himself as one of the top collegiate head coaches in the nation. Five times in the past decade, ASU has been ranked in the Top 12 in the country. Twice in that same decade, Murphy has had teams finished in the Top 3 in the country; a feat matched by only nine other schools and no other major sports program in the state of Arizona. Murphy's ASU squads are always present in the national Top 25, including a streak of 100 consecutive weeks in the polls that lasted from 2000 until the middle of 2005.

In 12 seasons at the helm of the Sun Devil program, Murphy is 480-242-1 and has led the Devils to the NCAA Tournament in seven straight years and nine of the last ten. He owns an all-time 38-27 record in NCAA Tournament action as a head coach and is 29-19 in post-

season play at ASU. His coaching accomplishments include becoming the youngest collegiate coach to reach 500 career victories (with 75 percent of the wins at the Division I level).

In over 20 years of coaching at the collegiate level, Murphy owns a career 853-413-4 record. At the Division I level alone, Murphy has recorded 798 wins in 19 years, averaging 42 wins a year. With 20 more years of coaching, Murphy is on pace to break the all-time NCAA victories record by the age of 65. Before arriving in Tempe, Murphy took a virtually unknown Notre Dame baseball program from a non-fully funded sport into the national spotlight. His Notre Dame teams averaged over 45 wins a season during his seven years in South Bend.

GIVING BACK

In 2006, Pat Murphy made an unprecedented gesture, donating \$100,000 back to the Arizona State University baseball program to help fund facility improvements. The donation will be used to fund the "Tillman Room" in honor of brothers Pat and Kevin Tillman. Kevin was a member of the Sun Devil baseball team from 1997-99. During those years, Murphy and Pat became close, as Pat would frequently attend baseball games and practices in support of his younger brother, Kevin. The sports medicine room inside the baseball clubhouse will carry the theme of the "Tillman Room" and serve as an area to inspire and pay tribute to these American heroes.

DEVILS RETURN TO OMAHA IN 2005

The 2005 season was a memorable one for Murphy and the Sun Devils, as ASU made their 19th trip to the College World Series in Omaha, Neb. The Sun Devils finished the year with a 42-25 record, the fifth 40 win season under Murphy. Earning their sixth straight postseason berth, ASU rolled through the Regionals held at Packard Stadium, setting up a match-up with defending national champion Cal-State Fullerton, who eliminated ASU in 2004. The Sun Devils got their revenge, defeating the Titans in three games to earn a spot in the 2005 College World Series. Arizona State would finish third in the World Series, their fifth third place finish in school history. They finished the season with a Top Six ranking in all four of the college baseball national polls, including two #3 rankings. 11 Sun Devils earned All-Pac-10 honors, led by Travis Buck and Jeff Larish, who earned First Team distinctions. Larish led the Pac-10 with his 23 home runs, while Buck led the conference with his 110 hits. Seven Sun Devils were selected in the Major League Baseball Draft, with Travis Buck going in the First Round to the Oakland Athletics.



QUICK FACTS

Overall Record 853-413-4 (.675, 22 seasons)
Record at ASU 480-242-1 (.665, 12 seasons)
Overall D1 Record 798-358-2
Postseason Record 38-27 (.585, 13 overall)
 (win total 8th among active head coaches)
Postseason at ASU 29-19 (.604, 9 overall)
NCAA Regionals 29-21 (.580, 13 overall)
NCAA Regionals at ASU 20-13 (.606, 9 overall)
NCAA Super Regionals 3-3 (.500, 2 overall)
College World Series 6-3 (.667, 2 overall)
 (winning percentage 2nd among active head coaches)

COLLEGIATE COACHING CAREER

Maryville (Tenn.) Head Coach — 1983
 Maryville (Tenn.) Assistant Football Coach — 1983
 Florida Atlantic Assistant Coach — 1984-1985
 Claremont-Mudd Scripps Asst. Football Coach — 1985-1986
 Claremont-Mudd Scripps Head Coach — 1986-1987
 Notre Dame Head Coach — 1988-1994
 Arizona State Head Coach — 1995-Present

POSTSEASON

2 College World Series Appearances — 1998, 2005
 1 College World Series Championship Game Appearance — 1998
 3 Regional Titles — 1998, 2003, 2005
 1 Super Regional Title — 2005
 13 NCAA Regional Appearances — 1988, 1992, 1993, 1994, 1997, 1998, 2000, 2001, 2002, 2003, 2004, 2005, 2006
 9 NCAA Regional Appearances at ASU — 1997, 1998, 2000, 2001, 2002, 2003, 2004, 2005, 2006
 1 Pac-10 Title — 2000

ACCOLADES

1 NCAA Coach of the Year — 1998
 1 Pac-10 Coach of the Year — 2000
 3 MCC Coach of the Year — 1989, 1990, 1992
 West Region's Division III Coach of the Year — 1986
 800th Career Win — April 22nd, 2005

INTERNATIONAL COACHING

Netherlands Olympic Team Head Coach — 2000
 *upset Cuba for country's first Olympic loss
 Holland Head Coach - European Championship — 1987
 New South Wales (Australia) State Manager — 1984

COLLEGIATE PLAYING CAREER

Florida Atlantic - Catcher, Pitcher — 1981-1982
 FAU's 20th Anniversary All-Star Team - Pitcher/UTL

PROFESSIONAL PLAYING CAREER

San Francisco Giants Organization — 1982
 San Diego Padres Organization — 1983
 Australian Pro League — 1984
 Tri-City Triplets - Player — 1985
 Tri-City Triplets - Player/Manager — 1986

OTHER ACTIVITIES

NCAA Baseball Committee — 2006-Present
 Established PTM Programs for Youth — 1995-Present
 March of Dimes Leadership Award — 2001

COLLEGE EDUCATION

Bachelor's Degree, Education, Florida Atlantic — 1982
 Master's Degree, Education, Florida Atlantic — 1984

PERSONAL

Born - Syracuse, NY
Birthdate - November 28, 1958
Children - Keli (21), Kai (6)



PAT MURPHY

continued

BEATING ARIZONA

In the rivalry series against the University of Arizona, Murphy has guided ASU to a 37-22 record (.622) in his 12 seasons in Tempe and won 10 of 12 season series from the Wildcats. He also has a 17-12 record (.586) at Sancet Stadium in Tucson.

SUCCESS IN THE PAC-10

Since the 2002 season, no other Pac-10 school has won as many games as ASU, both overall and conference games. A model for consistency within the conference, ASU has an overall record of 211 wins and 99 losses (.681) since 2002 and a conference record of 73 wins and 47 losses (.608) in that same period. Murphy is also second among current Pac-10 head coaches in career winning percentage. Through 12 seasons at the helm of ASU, Murphy has a .665 winning percentage. Only Stanford's Mark Marquess has a higher winning percentage (.670 in 30 seasons at Stanford).

SILENT SUCCESS

Overcoming challenges has always been Pat Murphy's forte. When he took over the ASU job in 1995, Murphy was faced with the task of replacing a legend in the late Dr. Jim Brock. After resurrecting the Notre Dame baseball program and building it into a national contender, Murphy welcomed the opportunity and privilege that came with taking over the ASU baseball program. Despite a transition period that saw his 1995 team (with nine wins against teams ranked in the Top 10) and 1996 team (ranked in final Top 25 poll) both left home from the NCAA tournament, Murphy has enjoyed a consistent and measurable amount of success during his tenure in Tempe. (The only other team ranked and left home from the tournament was Murphy's 1991 Notre Dame team) The 1997 team finished a pitch away from Omaha while in 1998, Murphy became the fastest coach to ever reach the National Championship game after taking over a program. The 2000 team won the school's 17th conference championship and set the stage for some impactful recruiting classes to leave their mark on the program. In 2003, ASU got off to a 28-1 start and cruised to a Super Regional match up with #3 Cal-State Fullerton. Unfortunately, the #5 Sun Devils battled the #3 Titans for a spot in Omaha, while two unranked teams faced off in another Super Regional. The 2004 team was awarded a #1 national seed heading into the postseason, but was unfortunately sent on the road to face-off with eventual National Champion Cal-State Fullerton in the first round of the NCAA regionals. In 2005, the Sun Devils returned to Omaha after two seasons of being frustratingly close. All said, the 1997, 2000, 2003, and 2004 teams were all National Championship caliber and missed the opportunity to represent ASU in Omaha by mere pitches.

THE ZANY SIDE OF MURPHY

With a reputation that precedes him, anyone familiar with the ASU baseball program will tell you that the Pat Murphy you hear about and the Pat Murphy you get to

know are two totally different people. With his stoic concentration and intense attention to detail during games, many judge Murphy on game day behavior alone. However, spend just a few minutes with him or speak to someone that has played for or coached with "Murph" and you'll see the real representation of Pat Murphy. The consummate player's coach, Murph is well known for his knowledge of the game and ability to help student-athletes maximize potential — both on the field and in the classroom — but also to provide an environment to keep his team loose and enjoying the opportunity to represent the maroon and gold. Murph has been known to sing in the dugouts, play the harmonica during team meetings, have his teams dress in shirt and tie in order to maintain a "business like" approach to practice, and box a priest

DID YOU KNOW?

- Pat Murphy's first managerial win in professional baseball (Tri-Cities Triplets) was won by him. Down, 10-1, in the ninth inning with two outs and no one on base, the Triplets came all the way back to tie the game and eventually win, 14-10, in 11 innings. Murphy pitched 4.1 innings out of the bullpen to defeat the Spokane Indians. Murphy was the player-coach for the Triplets (Northwest League) for two seasons.
- Murphy has never had a player declared academically ineligible.
- Murphy does not maintain an office after giving up space in the Carson Center to create the Golden Spikes Conference Room and preferring to use his area at the ballpark as a recruiting lounge.
- Prior to settling at Florida Atlantic, Coach Murphy played basketball and baseball at LeMoyne College and played football and baseball at Bowling Green while pursuing a career in professional boxing.

for charity. Murph also has a tattoo on his back that carries the names of several people influential in his life and that motivate him to be the same influential source for others. Close friends Harvey Dorfman and Pat Tillman, children Kai and Keli and personal heroes Bruce Springsteen, Muhammad Ali and Ara Parseghian are all represented on the tattoo.

THE STREAK

One of the NCAA's most impressive statistical streaks came to an end in 2004 when the Sun Devils were shut out for the first time in 506 games. With a 6-0 loss to NCAA Tournament participant Oklahoma on Feb. 15, 2004 at Surprise Stadium in Surprise, Ariz., ASU endured its first shutout since April 7, 1995 (at USC). The Sun Devils combined to go 338-167-1 during the nine-year streak and averaged 9.4 runs per game. ASU broke the NCAA record (previously 349 set by Coastal Carolina) on April 7, 2001, exactly six years to the day when the Devils last endured an offensive shutout. Notable pitchers the Devils faced during the streak include Mark Prior (USC), Barry Zito (USC),

Jeremy Guthrie (Stanford), Kirk Saarloos (CS Fullerton), Jason Young (Stanford), Ben Diggins (Arizona), Adam Johnson (CS Fullerton), Ryan Drese (Cal), Jeff Weaver (Fresno State), Jered Weaver (Long Beach State), Jeff Niemann (Rice), Chad Hutchinson (Stanford), Abe Alvarez (Long Beach State) and Adam Pettyjohn (Fresno State).

THE INTERNATIONAL STORY

Throughout his illustrious career, Murphy has earned accolades in the international ranks as well, as he led the Dutch Olympic Baseball Team in the Sydney 2000 Games. In the 2000 Olympics, Murphy returned to the international baseball scene, helping lead the Dutch National team to their best showing in international competition with a 3-4 record in the Sydney games. The Netherlands placed fifth with wins over Australia, Cuba and their rival Italy. The Dutch's 4-2 victory over Cuba was the first loss in Olympic play at the time for the international power, a span that covered 21 games. The win by Murphy's squad was noted by nbcolympics.com as one of the top four upsets in Olympic team competition. The Dutch went on to finish fifth in the Olympic tournament. In a pre-Olympic tournament, Murphy beat Team USA and their famous manager Tommy Lasorda. No stranger to international baseball, his ties to the Dutch team stretch back more than a decade. In the summer of 1987, Murphy led Holland to the European Championship, a victory that qualified the squad for the 1988 Seoul Olympics. He was asked to coach Holland in the Seoul Olympics, but declined so he could return to the University of Notre Dame, where he had recently been named head coach.

A PROGRAM BUILDER

Murphy has helped to keep a tradition alive that has seen ASU record 45 straight seasons with at least 30 wins. Murphy's Sun Devil squads have averaged 40 wins per season and have advanced to the NCAA tournament in nine of last ten seasons. After building Eck Stadium at Notre Dame — a dream of his that no one said would ever happen — Murphy is also overseeing the renovation of ASU's facility, Winkles Field-Packard Stadium at Brock Ballpark. The facility is undergoing a complete overhaul and has already seen the additions of a new practice infield, hitting facility, playing field, clubhouse, entrance since Murphy's arrival. The next phase of improvements will include alumni tribute areas, chairback seating and an expanded press box.

MURPHY IN POSTSEASON PLAY

Posting a career 38-27 (.585) record in postseason play — placing him within the Top Ten of active coaches for postseason wins — Murphy's NCAA playoff repertoire also includes a niche for carrying out the upset victory. On five separate occasions his teams have defeated the regional host team, while six of the last ten Murphy-coached squads to make the playoffs have reached the "Sweet 16" or better. These accomplishments have come despite the fact that his teams have



been sent to play the No. 1-ranked team seven times in regional play (1992 at Miami, 1993 at Florida State, 1994 at Clemson, 1997 at Miami, 1998 at Wichita State, 2001 at Cal State Fullerton and 2006 at Rice). The 2006 season marked the seventh straight year ASU advanced to the Tournament and the ninth out of the last ten.

ACADEMIC SUCCESS

Murphy's squads continue to demonstrate excellence in the classroom as well, as ASU boasted more First-Team Academic All-American selections (three) in 1999 than any other program in the nation. It was the most selections by an Arizona State baseball team in the history of the school. Former Devil Casey Myers (1998-2001) was a three-time selection to the Academic All-American team and twice the Academic All-American of the Year. In all, ASU has had five selections to the Academic All-American team since 1999, and 43 Devils have earned All-Pac-10 academic acclaim under Murphy's guidance since 1995. During Murphy's tenure, the baseball squad has an overall 2.60 GPA. It has steadily risen since he arrived in 1995, improving the 2.31 GPA from 1991-95. In addition, in his 22 years as a head coach, he has never had a player declared academically ineligible.

AN OFFENSIVE POWERHOUSE

The 2003 Arizona State Baseball team dominated the final release of the NCAA statistics as the only team in the nation (283 Division I teams) to rank in the top 10 in the four major statistical categories. ASU, who finished the season ranked No. 7 in the nation (Baseball America) with a 54-14 record, placed second in batting average (.347), second in scoring (10.03 runs per game), eighth in pitching (3.32 ERA) and ninth in fielding (.973 FLD%). In addition, the Sun Devils also ranked fourth in win-loss percentage (.794), fifth in slugging percentage (.529) and 28th in home runs per game (1.18). ASU also broke the NCAA record with 14 grand slams. Individually the Sun Devils also had several players rank nationally. Dustin Pedroia led the nation with 34 doubles (0.50 per game) and was also 31st with a .404 batting average and fourth in toughest to strikeout. Sophomore first baseman Jeff Larish led the nation in walks (1.20 per game), was sixth with 1.46 RBI per game (95 total) and 18th in runs scored per game (1.23). The 2004 season also saw ASU's offense lead the Pac-10 with a .325 batting average and averaging 7.89 runs per game. ASU also led the nation in hitting in 1999 while tying a school record with a .356 batting average. Murphy's 2002 squad nearly repeated as the NCAA leader in 2000, but finished second with a .346 average. The ASU offense has been potent under Murphy's watchful eye, combining to hit .331 and averaging 9.11 runs per game. The Devils have led the Pac-10 in hitting in six of the last seven years, including last season when ASU hit .319.

MAJOR LEAGUE PIPELINE

Grooming players for the major league amateur draft has become Murphy's forte. In fact, in 22 seasons as a head coach, only three players have been drafted lower after playing for Murphy than he was out of high school or junior college — and those circumstances are widely injury related. During the Murphy era, 90 players have been selected in the annual MLB Draft, leading all NCAA

schools. The 2003 draft had a record 12 Devils selected, with three more signing free agent contracts. Several of Murphy's former players have appeared in the major leagues, including Craig Counsell (Milwaukee Brewers), Willie Bloomquist (Seattle Mariners), Jeff Duncan (New York Mets), Jon Switzer (Tampa Bay Devil Rays), Chris Duffy (Pittsburgh Pirates), Andre Ethier (Los Angeles Dodgers) and Dustin Pedroia (Boston Red Sox).

COMMUNITY SERVICE

Community outreach has been a signature of Murphy's teams, who are taught to give back to their communities and be positive role models. In 1995, Murphy created a non-profit organization called PTM Programs For Youth. The organization was originally referred to as the Guadalupe Project and provided baseball instruction and life skills lessons to underprivileged youth from Guadalupe, Ariz., a small town within the metro Phoenix area. Now known as the Sandlot All-Stars and open to a broader group of children in the East Valley, the program provides year-round mentoring for kids ages 5-9 by Arizona State coaches and student-athletes. The primary goal of the program is to build leadership skills, self-esteem, encourage academic success and explore career opportunities. With help from the Tempe Diablos, Murphy has also instituted the Diablo Youth Clinics, held at ASU's Packard Stadium for kids aged 7-12. More than 250 kids took part in the program's inaugural clinic in 1999. In January 2000, along with the ALS Arizona Chapter, Murphy and ASU baseball sponsored the first 5K Fun Run to Beat Lou Gehrig's Disease. ASU baseball student-athletes have also participated in events with the Phoenix Children's Hospital and Susan G. Komen Foundation. For his constant community service and giving back to the greater Phoenix area, Murphy was awarded the 2001 March of Dimes Leadership Award.

ALWAYS A TOP RECRUITING CLASS

The 48-year-old Syracuse, N.Y., native and his

coaching staff have assembled some of the finest recruiting classes in the nation during each of the past 11 years. His 1995 class was ranked No. 1 in the nation, with names such as Phill Lowery, Andrew Beinbrink and Ryan Mills. Year after year, Murphy gets commitments from several of the nation's top prep players to become Sun Devils. For the past nine seasons, ASU has had a recruiting class ranked in the Top 15. This season is once again no exception, as Murphy will lead 22 newcomers onto the field as Sun Devils for the first time. Despite a current trend that sees many teams reload with just top prospects, Murphy also brings players in to mold into a scrappy and hustling player. As Baseball America proclaimed in its annual recruiting class review in reference to Murphy's and ASU's unique and successful style of recruiting, "if you don't understand it, then you're not a Sun Devil."

THE SUN DEVIL YEARS

The 2004 campaign marked yet another successful season for Sun Devil Baseball. ASU recorded a 41-18 record, marking the fourth 40-win season under Murphy. Compiling a 28-7 record against the top-ranked non-conference schedule in the nation, the Sun Devils earned the national No. 7 seed while advancing to the NCAA Tournament for the fifth straight year. Despite suffering a disappointing exit from the NCAA Tournament at the hands of eventual National Champion Cal State Fullerton, ASU earned a final ranking of No. 20 in the nation (Sports Weekly/ESPN) and spent the entire season ranked in the national polls. Fourteen Sun Devils earned All-Pac-10 honors, including first-team selections for Travis Buck, Dustin Pedroia and Jason Urquidez. Pedroia led ASU hitting .393 (96-for-244) and earned first-team All-America honors. Urquidez led the Pac-10 with 12 victories, marking the most by a Sun Devil starter since 1993. Buck earned a spot on the USA Baseball National Team after hitting .373 with nine home

YEAR-BY-YEAR RECORD

YEAR	SCHOOL	OVERALL	NOTES
1983	Maryville (Tenn.)	10-21-1	School's most wins in 10 years
1986	Claremont-Mudd Scripps	24-16	Southern California Intercollegiate Champs
1987	Claremont-Mudd Scripps	21-18-1	
1988	Notre Dame	39-22	MCC Eastern Division Champs
1989	Notre Dame	48-19-1	Program's first NCAA Appearance since 1970
1990	Notre Dame	46-12	.793 winning percentage - fourth best in Division I
1991	Notre Dame	45-16	Second MCC Championship
1992	Notre Dame	48-15	Third MCC Championship/NCAA Regional Final
1993	Notre Dame	46-16	Fourth MCC Championship/NCAA Regional Final
1994	Notre Dame	46-16	Third Straight MCC Championship and NCAA Regional
1995	Arizona State	34-21	Recorded nine wins over top 10 ranked teams
1996	Arizona State	35-21	Finished ranked 25th in nation but no NCAA Tournament
1997	Arizona State	39-22	Devils one out away from CWS trip
1998	Arizona State	41-23	Named Baseball America Coach of the Year/2nd at CWS
1999	Arizona State	39-21	Devils lead NCAA in hitting (.356) and scoring (11.32 runs/g)
2000	Arizona State	44-15	ASU wins Pac-10 title/Murphy Pac-10 Coach of the Year
2001	Arizona State	37-20-1	NCAA Tournament berth for fourth time in five years
2002	Arizona State	37-21	Third straight NCAA Tournament Appearance
2003	Arizona State	54-14	Ranked in top 10 of four major NCAA statistical categories
2004	Arizona State	41-18	Fourth 40 win season at ASU/national #1 seed
2005	Arizona State	42-25	Third place finish in CWS
2006	Arizona State	37-21	Seventh straight trip to NCAA Tournament
TOTALS			
OVERALL: 853-413-4		DIVISION I: 798-358-2	ASU: 480-242-1



PAT MURPHY

continued

runs and a team-leading 58 RBI. ASU once again led the Pac-10 in hitting with a .325 team batting average and averaged nearly eight runs per game.

In addition to finishing in the top 10 in the NCAA in the four major statistical categories (scoring, batting, pitching, fielding), the 2003 season also brought about a number of entries into the ASU single-season record books. Murphy's squad ranked second in fielding percentage (.973), third in runs scored (682), sixth in hits (858), fifth in doubles (160), second in RBI (630), third in walks (406), tied for third in batting average (.347), fifth in pitching shutouts (10) and third in ERA during the aluminum bat era (3.32). The 54 wins are the most by a Sun Devil squad since the 1988 team finished with 60 victories. ASU also set an NCAA record with 14 grand slams. Individually, several Sun Devils also had record-breaking seasons. Shortstop Dustin Pedroia became only the 22nd player with 100 hits and the 16th player to hit .400. He set an ASU and Pac-10 record with 34 doubles. Sophomore first baseman Jeff Larish had a breakout season entering his name into the record books in several categories, including ranking fifth with 95 RBI and second with 78 walks. He broke the school record with four grand slams and tied the single-game records with nine RBI and four doubles.

Murphy led the 2002 Sun Devils to a 37-21 record overall, placing third in the Pac-10 with a 15-9 record. ASU hosted the NCAA Mesa Regional at Hohokam Park, going 2-2 before losing to No. 1 seed Houston. Dustin Pedroia, Andre Ethier and Jeremy West all earned first-team All-Pac-10 honors, while Pedroia became ASU's seventh player to compete for Team USA. The pitching staff posted a 4.40 ERA, ranking second in the Pac-10 and the lowest during the Murphy head coaching era.

The 2001 Sun Devils posted a 37-20-1 record en route to yet another NCAA Tournament bid. Led by All-Americans Casey Myers and Andy Torres and a crop of seven freshmen All-Americans, the Devils placed third in the Pac-10 and finished ranked 22nd in the nation. Myers repeated as the Academic All-American of the Year and became only the third player in Pac-10 history to repeat as the Pac-10 Player of the Year. Since the Pac-10 joined the North and Six-Pac in 1999, ASU has won three of the four Pac-10 Player of the Year awards.

The 2000 edition of Arizona State baseball finished with a 44-15 record, and made its third postseason appearance in four years. Finishing within the Top 12 in the nation, the Sun Devils also captured their first Pac-10 Championship since 1993 with a 17-7 conference record, earning the league's automatic bid by virtue of tiebreakers against both Stanford and UCLA. Murphy's 2000 Devils once again made a dent on the NCAA record books, leading the nation in scoring (10.97 runs/game), second in batting average (.346), fifth in fielding (.971), seventh in home runs (1.46 HR/game), second in slugging percentage (.561) and first in triples (0.63 per game). Senior outfielder Mitch Jones, who Murphy lured to ASU just one year earlier as a junior college transfer, set the ASU record for home runs with 27.

Despite bowing out to Texas in the 2000 regional

championship game, the Sun Devils led the nation in scoring and finished near the top in batting average for the second straight season, averaging just under 11 runs per game and hitting .346. ASU, playing "old school" college baseball, avoided being swept by an opponent in 2000. The Sun Devils also led the Pac-10 in attendance, averaging more than 2,600 fans at each home game. Mitch Jones, Casey Myers and Jon Switzer earned All-America honors. Adding to his credentials, Murphy was voted the 2000 Pac-10 Coach of the Year by his peers.

During the 1999 season, Murphy assembled one of the most prolific offensive teams in ASU history. Concluding the year with a 39-21 overall record, the 1999 Sun Devils led the nation in batting average (.356) and scoring (11.32 runs per game). Their .356 team average tied the top single-season mark in ASU history, set by the 1981 National Championship Team. The Devils had the remarkable offensive season despite playing the first 17 games of the season with wood bats. In addition, the Sun Devils led the conference in virtually every offensive category. Arizona State had more players drafted in the 1999 Major League Amateur Draft (10) than any other school in the Pac-10 Conference. The 1999 season also produced a Sun Devil Pac-10 Player of the Year and current Seattle Mariner utility player Willie Bloomquist.

Murphy and his coaching staff led the 1998 Sun Devils to the pinnacle of collegiate baseball—the College World Series in Omaha, Neb. It was Murphy's first trip to the big show, and it would be a memorable one. Earning an at-large bid into the NCAA Tournament, Murphy's squad was once again tested by being sent to play the No. 1 team in the nation. Traveling to Wichita, Kansas, the Devils started a journey that would eventually land them in college baseball's premier showcase, becoming ASU's 18th team to play in the annual College World Series, and only the second to play for the national championship without having hosted a regional tournament. The Devils finished regional play 4-1, notching wins over nationally ranked Georgia Tech, Oklahoma State and Wichita State along the way to advance to Omaha. Advancing through the CWS bracket without a loss, ASU faced Pac-10 foe USC in the championship game. In a record-breaking game, ASU came up short, falling to the Trojans 21-14. ASU finished second in the nation with a 41-23 overall record and a third-place finish in conference play (18-11). After storming through the postseason, falling just one win short of a national championship, the Sun Devils concluded the season with a consensus No. 2 ranking and a total of six players earned All-America status. In addition, 10 Sun Devils were taken in the 1998 MLB Amateur Draft, including Ryan Mills, the sixth pick overall by the Minnesota Twins. In just his fourth season at ASU, Murphy became the second-fastest Pac-10 coach to reach the CWS championship game, behind only former Sun Devil Coach Jim Brock. For his efforts, he was named the Baseball America



Coach Murphy joins Craig Counsell, his first recruit at Notre Dame, at the Arizona Diamondbacks' home finale in 2006.

National Coach of the Year.

Only two years into his ASU coaching career, Murphy took the program back to where it belonged, in postseason play. Murphy guided the Devils to their 16th regional appearance, taking his team across the country to face No. 1 seed Miami in Coral Gables. The '97 Sun Devils came within one out of making an 18th trip to Omaha, bowing out in the championship game of the Atlantic Regional to host Miami in dramatic fashion. After defeating the No. 1 Hurricanes 10-3, ASU dropped a pair of one-run games to Miami to fall short of a trip to Omaha. ASU finished with a No. 11 ranking by Baseball America and a 39-22 overall record.

The Sun Devils again fell short of the NCAA Tournament in 1996, despite finishing the year ranked 25th by Baseball America and posting 35 Division I wins, with eight of those coming against top 25 teams. The 1996 squad posted the fourth-best team batting average (.338) in ASU history, and led the Pac-10 Southern Division in seven offensive categories including batting average, runs and hits. The Devils recorded

THE YOUNG LEFTY

Kai Joseph Murphy was born Aug. 26, 2000 and is quickly becoming one of the favorite future Sun Devils to watch. Always present rounding the bases after games at Packard Stadium; Kai is a six-year-old future big leaguer who loves playing baseball and hanging out on his own sandlot at the Murphy house in Tempe. His favorite players include Ichiro and former Devils Travis Buck, Dustin Pedroia and Benny "The Jet" Rodriguez from his favorite movie, *The Sandlot*.





FAMILY MAN

Coach Murphy's daughter, Keli, will graduate a year early and with honors from ASU this spring. Keli is an accomplished distance runner, recently completing the PF Chang's Rock n Roll marathon, and is currently training for the Boston marathon in April. After graduation, Keli will participate in a study abroad program in Spain.

a 35-21 record, despite being without pitching aces Phill Lowery, Kaipo Spenser and Ryan Mills for most of the year. Murphy graduated 11 players from the 1996 team to the Major League Baseball Amateur Draft.

Inheriting an average team in 1995—at a school where average is unacceptable—with only two returning starters and without the benefit of his own recruiting class, Murphy's first ASU squad posted 34 wins in 1995. Always a flare for the big game, nine of those victories came over Top 10 foes such as College World Series participants USC, Stanford and Florida State. During one stretch of games in mid March, Murphy led the Devils to six consecutive wins over eventual CWS participants Oklahoma, USC and Stanford. Despite being ranked in the top 25 all season and the numerous big wins, the Devils fell short of a trip to the NCAA Tournament, but the foundation was laid for the Devils to remain as one of the powers in college baseball.

THE NOTRE DAME YEARS

Prior to arriving at Arizona State, Murphy spent the previous seven seasons as head coach at the University of Notre Dame, where he guided the Irish to a consistent level of success unmatched in the history of the program. Building the program from the ground up with the support of only four full scholarships, Murphy guided the Irish to a 318-116-1 (.732) record in South Bend, including consecutive trips to NCAA regional finals in 1992, 1993 and 1994, a streak matched only by Texas. He built Irish Baseball into a Top 25 program, laying a strong foundation that still exists today. Under Murphy's guidance, the Irish averaged more than 46 wins per season and rejuvenated the pride in the program to the point where a new 3,000-seat stadium was built on the campus in the fall of 1993. Murphy's 1994 Notre Dame squad finished 46-16 and came within one win of a trip to the College World Series. The Midwestern Collegiate Conference Champions advanced to the finals of the NCAA East Regional in Clemson, S.C., knocking off the host and No 1-ranked Tigers along the way. Notre Dame finished the season ranked 18th by Collegiate Baseball and 20th by Baseball America. Current Milwaukee Brewer Craig Counsell and Texas Rangers pitcher Chris Michalak are just two of Murphy's products from ND who have excelled at the Major League level.

Murphy began his Notre Dame tenure in 1988, taking over a team that posted a combined 65-80 record in the three previous seasons. With a nucleus of players who

finished 15-29 in 1987, and had never enjoyed a winning season at Notre Dame, Murphy began revamping the program and promptly led the Irish to a 39-22 mark. The following six campaigns saw the Irish garner national rankings, conference titles, NCAA tournament appearances, 45-win seasons and more.

Murphy's efforts were rewarded in just two years, as in 1989 the Irish posted a school-record 48 wins and logged their first NCAA tournament appearance in 19 years. Murphy guided the program to its first national ranking as the Irish were rated that year as high as 16th in The Sporting News, 23rd in Baseball America, and 24th in the Collegiate Baseball polls. Later, the Irish would earn their first MCC title by winning the final four games of the conference tournament in a span of 23 hours as Murphy snared his first MCC Coach-of-the-Year honor. That season was followed by two more 45-win seasons. The 1990 Irish squad put together a 46-12 record, which ranked fourth in the nation. Over the last 29 games of the season, Notre Dame achieved a 25-4 mark to bring Murphy another MCC Coach-of-the-Year award.

In 1991, Notre Dame overcame a schedule that saw the Irish play their first 27 games on the road to post a 45-16 record. Included were wins away from home over national powers Texas and Miami as well as eventual national champion LSU and a midseason 18-game win streak. In 1990, Murphy began a baseball tournament

BY THE NUMBERS

.627	Winning % against Arizona (37-22)
8	Team USA selections
11	Academic All-Americans
31	Freshmen All-Americans
32	All-America selections
42.0	Average wins per season (DI)
114	MLB Draft Picks in 18 seasons
480	Wins in 12 seasons at ASU
853	Career coaching victories
1270	Career games coached in 22 seasons
75	Career wins against teams ranked in the Top 10
144	Career wins against teams ranked in the Top 25
12	Beat #1 team in the nation 12 times in 12 years at ASU (6 of them coming on the road)

LUCK OF THE IRISH

During his seven-year head coaching stint at Notre Dame, Murphy led the Irish to a 318-116-1 record. Turning the non-fully funded program from a virtual unknown into a national power, he led the Fighting Irish to the NCAA Tournament in only his second year (1989), ending an 18-year stretch that saw Notre Dame fail to reach the NCAA Tournament. The Irish averaged just over 45 wins a season under Murphy and advanced to the NCAA regional finals three different times.

hosted by Notre Dame that was held in Seattle's Kingdome. The 1992, 1993, and 1994 seasons added emphasis to Murphy's status as one of the nation's top coaches, as his Irish teams grabbed MCC titles and in each year beat regional hosts to come within one game of a trip to Omaha for the College World Series. It's no wonder why the Irish were labeled in 1992 by Baseball America as "the nation's fastest rising program." In fact, Murphy shunned the University of Miami's attempts to lure him away from Notre Dame and accept the Hurricanes' head job in 1992. When he left Notre Dame for ASU in 1995, he became the first Irish head coach of any sport to leave South Bend for another job.

WHERE IT ALL STARTED

In addition to his head coaching and international coaching experience, Murphy has spent numerous years in the collegiate ranks as both a player and assistant coach. He gained his collegiate experience as a pitcher at Florida Atlantic University, where he received his bachelor's and master's degrees. Murphy played catcher, infield and pitched for FAU, and was recently honored on FAU's 20th Anniversary All-Star team as a pitcher and utility player. After college, Murphy signed a professional baseball contract with the San Francisco Giants in 1982. His four-year professional career included stints in the Giants and San Diego Padres organization, along with two independent clubs.

Murphy began his collegiate head coaching career at Maryville (Tenn.) College, leading the Division III Fighting Scots to their best record in 10 years during his first and only season in 1983. He was also an assistant football coach while at Maryville. He then returned to Florida Atlantic to serve as an assistant coach and administrative assistant to the athletic director. During his two-year stay, FAU compiled an 84-30 record and was consistently ranked among the Top 10 Division II teams in the nation.

During the summer of 1984, Murphy embarked on his first international experience, helping develop baseball in Australia as a state manager in New South Wales. He was in charge of running baseball clinics and promoting the sport to the public. Following his stint in Australia, Murphy was named player-coach of the Tri-Cities (Wash.) Triplets of the Single-A Northwest League, making him the youngest manager in professional baseball.

A return to the college ranks came in 1986, as Murphy signed on as head coach at California's Claremont-Mudd-Scripps Colleges. In his first year as head coach, Murphy piloted Claremont to a 24-16 record, earning the program its first Southern California Intercollegiate Athletic Conference championship in 11 years. Murphy was named the West Region's Division III Coach of the Year as the Stags finished the year ranked 10th in the nation.



WHAT THEY ARE SAYING

Coach Pat Murphy

CRAIG COUNSELL, *Former Murphy player at Notre Dame and current Milwaukee Brewer*

"Excluding my parents, no one has had a greater impact on my career as a baseball player and my development as a person than Coach Murphy."

WILLIE BLOOMQUIST, *Former ASU infielder and current Seattle Mariner*

"Coach Murphy is a very intense baseball coach, and that's what makes him so special, because he gets the most out of his players. He is great at teaching his players not only on the field, but off the field as well. He is a great all-around individual."

JEFF MOORAD, *General Partner, Arizona Diamondbacks*

"I've had the honor of knowing Murph for over 15 years now and consider him a great friend. He has built a reputation for being one of the finest coaches college baseball has to offer. We see firsthand the positive impact that he has on his student-athletes. He understands the importance of balance in their lives, stressing a need for success both on the field and in the classroom. His preparation for so many of his players that move on to the professional level is evident with a level of maturity and confidence that seems to be a notch above the rest."

ROLAND HEMOND, *Executive Advisor, Chicago White Sox*

"Coach Murphy teaches his players sound fundamental baseball and also to become 'mentally tough' in preparing for professional baseball and in facing challenges in life."

HARVEY DORFMAN, *Sports psychologist*

"What I admire is his intensity, which is often misunderstood by people who don't know him. My admiration is based on the fact that when he addresses whatever task is in front of him, he does it with such strong focus that many, who are incapable of doing it, either misunderstand it or are envious. His intensity includes competition and doing the best for his players as athletes, students and young people."

LOU HOLTZ, *College Football Coaching Legend*

"Pat is one of the best coaches I've ever observed regardless of the sport. He is enthusiastic, intelligent and an excellent communicator and motivator. I learned a great deal by observing him coach his Notre Dame teams."

BARRY BONDS, *Former ASU outfielder and 7-time NL MVP*

"ASU baseball has a great tradition of excellence and continues to be one of the top programs in the country. Coach Murphy's impact on the baseball program is undisputable. He commands respect and love of the game from his players and coaches with passion. I'm proud to be a Sun Devil and look forward to seeing an ASU College World Series National Champion"

BOB WELCH, *1990 Cy Young Award winner*

"Coach Murphy is someone that stays your friend for life. If my son had the opportunity to play at ASU, I would feel very comfortable with what Coach Murphy does and how he runs his program. He is like a brother to me and has always been a great help for me. He is the guy that can pick you up when you are down. I am thankful to have a friend like Coach Murphy."

ANDRE ETHIER, *Former ASU outfielder, current Los Angeles Dodger*

"I came in confident but not confident enough, and didn't know what type of player I was or what direction I was going in. Coach Murphy and his staff pointed me in the right direction and helped me tremendously in becoming the player I am today."

RON COOMER, *Major League veteran*

"Pat Murphy has been a truly great friend for a very long time, and is what competitive baseball is all about: a will to win and a plan to make it happen."



SCOTT BORAS, *President of Boras Corporation, representative of elite professional baseball players*

"Arizona State provides a longstanding tradition of collegiate baseball excellence and serves as one of professional baseballs most coveted resources for future Major League players. Under Coach Murphy ASU's baseball program is transcendent and now offers a preponderant academic philosophy that creates a diverse and prepared graduate."

ALAN NERO, *CSMG Sports*

"Coach Murphy and the ASU program continually develop some of the best talent in the game. His straight forward approach produces character and values."

BARRY ALVAREZ, *Former University of Wisconsin head football coach and current Athletic Director*

"I had the pleasure of working with Coach Murphy for three years at Notre Dame. He is intense, knowledgeable-a player's coach. He coaches baseball with a football mentality."

RICK MAJERUS, *Legendary College Basketball Coach*

"Pat Murphy's passion for the game is what drew me to him. He has the unique ability of helping players get better and improve their skill set. He is a terrific teacher of the game - it's been the study of his life. He's dedicated, energetic and enthusiastic and able to identify a player's strengths and utilize them as well as assess their weakness and make those better. Finally, the best thing about Pat Murphy is that he cares more about you as a person than as a player. He genuinely wants to see you improve in every facet of your academic endeavor. I know that graduation is the top priority, but equally important is the development of a young man and the relationship he has with others, what he will do with his life and how he lives it."

BOBBY WITT, *Major League veteran*

"I was very fortunate to have met Pat in 2001 — my last year in the Major leagues. He is a very respected man in the baseball industry and has one of the Top programs every year in the country. Not only is he an outstanding coach in his field but he is a great friend and wonderful father."

JOE GARAGIOLA JR.

Original Diamondbacks GM and current Senior VP, Baseball Operations for Major League Baseball

"Any player who plays for Coach Murphy can count on two things: He will make them a better player and a better person."

DAN EVANS, *Longtime Los Angeles Dodgers general manager, current Seattle Mariners Assistant GM*

"I've known Pat for over 15 years. He has a passion for baseball and teaching the game that very few people match in intensity. He is a winner!"

LUIS GONZALEZ, *Current Los Angeles Dodger outfielder*

"I have always been a big fan and supporter of Murph. He always has his players prepared for the challenge mentally and physically, not just at ASU but as they move further in their professional careers. He always has one of the top programs in the country."

MIKE GALLAGHER, *Former ASU pitcher*

"Pat is one of the best coaches I've ever observed regardless of the sport."

PHILL LOWERY, *Former ASU pitcher and current California highway patrol officer*

"He is one of the most dynamic people I have ever met. It goes without saying that he is an outstanding coach. He taught me a lot about baseball and life. He goes above and beyond the call of duty with everything he does for his players."

BOB LISANTI, *Former Notre Dame catcher under Murphy, current sports agent*

"The true test of a college coach is not only wins and losses, but the positive impact that coach has on each individual life. Pat Murphy's competitive zeal will always make him a winner on the field, but his impact on the players he coaches goes far beyond that. I use the lessons Pat Murphy taught me everyday in my life."

CONOR JACKSON, *Former Cal infielder, current Arizona Diamondback*

"ASU Baseball is a great program with a winning tradition. I couldn't stand playing against them. They are bulldogs out on the field. They are scrappy and never quit — regardless of the situation. The bulldog attitude was reflective of Coach Murphy and the way he teaches the game to his players."

BRIAN CLEARY, *Former Murphy assistant and current head coach at the University of Cincinnati*

"Not many would have left Notre Dame, especially to follow a legend [ASU coach Jim Brock] that had recently passed away. He had his dream job with Notre Dame baseball, and he developed it from nothing to a big-time program. It was his program. He did it without scholarships or funding. He just loves challenges, and that is a statement of who he is."

JOHN PAWLOWSKI, *Former Murphy assistant and current head coach at College of Charleston*

"With all of the parity and changes in college baseball, all big-time programs have had to make significant changes. These changes affect Arizona State as much as anyone else, and Murphy has done a tremendous job of quietly leading them to the World Series in '98 and having them in the hunt for the national title every year. It's tougher at ASU than ever before, and the draft especially impacts ASU more than other programs, but Murphy manages to do well regardless."

EDDIE BANE, *Former ASU pitcher and current director of scouting for the Anaheim Angels*

"Murph is doing a great job of following in the footsteps of two legends in Bobby Winkles and Jim Brock. Tough shoes to walk in, but Pat is handling it very well. He is doing all that it takes to keep ASU as one of the elites in college baseball. Murph gets the most out of his players and does the right thing by his players when it comes to college or professional baseball. I consider Murph a friend and a true baseball man that I would not hesitate to ask to evaluate a player."

TIM HUFF, *Toronto Blue Jays, National Crosschecker*

"My main observation of the players that come out of Arizona State is the toughness they display on the field. They are grinders and they are gamers. They take the toughness they learned at ASU and apply it into a 142-game minor league schedule, which is not an easy thing to do. They show up ready to play every day and that is a real tribute to the program and the coaching they came from."

KEITH BOECK, *Texas Rangers, Professional Scout*

"I see a bunch of former Sun Devils throughout the summer and I was really impressed with their work ethic. They get the most out of their ability and play the game the right way. They put their bodies on the line and get the job done every day. They are the gritty type of players that get the most out of their ability and are great to have as part of your organization. They know how to play winning baseball."

TIM ESMAY

Assistant Head Coach



Former Sun Devil player and assistant coach Tim Esmay enters his seventh year on the coaching staff at ASU and first as Assistant Head Coach. Esmay, a Scottsdale native, was a high-energy infielder (1986-87) and assistant coach (1988-90, 94) for the Sun Devils under legendary head coach Jim Brock. Prior to his return to Tempe in 2005, Esmay served as the head coach at the University of Utah for eight seasons. Esmay's main duties will include instruction of the outfielders and team offense.

Esmay was a two-year starter for the Sun Devils following an All-American career at Scottsdale Community College. The infielder hit .305 (121-for-397) during his two years in Tempe with 23 doubles and five home runs. He was a member of ASU's 1987 College World Series team and was named to the All-West Region team that season.

A graduate of Horizon High School, where his number 5 was retired in 1998, Esmay returns to ASU after posting a 213-235-1 record at Utah. He also coached at Brophy College Prep in Phoenix for two years (1992-93) and was an assistant at Grand Canyon University (1995) and Utah (1996) before taking over the head job in Salt Lake City in 1997.

In eight seasons at Utah he compiled a 213-235-1 record, including winning the 1997 WAC Conference Championship. Esmay had 18 of his players go on to play professional baseball, including three from his last team in 2004. He also had 27 players earn all-conference honors during his tenure.

Esmay's eight-year career at Utah also saw his teams completely rewrite the Ute record books. In his first season directing the Utah baseball program, Esmay did what no Ute coach had done in 32 years when he led Utah to a WAC division title and a 36-21-1 record in 1997. The Utes

posted a 22-8 record in the Northern Division that year. They also set nine school records as Esmay was named the 1997 Louisville Slugger WAC Coach of the Year. In 2002, Esmay guided Utah to a 33-26 overall and 16-14 conference record. The 33 wins is the second most in school history since 1963, and the second-place league finish is the Utes best since joining the MWC in '99. Senior pitcher Mitch Maio garnered 2002 MWC Co-Player of the Year honors.

Esmay earned a bachelor's degree in physical education from Arizona State in '88. Esmay and his wife Joell are the parents of two sons, Tucker and Cooper.

WHAT THEY ARE SAYING

"Coach Jim Brock would be so proud of Tim Esmay and indeed pleased that he's now the ASU assistant head coach. Tim's a true Sun Devil, who grew up here in the Valley and achieved his dream of being on the ASU baseball team and playing in the College World Series. He brings great experience of coaching and recruiting on many levels — high school, community college, and university. Tim also enjoys great support for his work from his wonderful wife Joell and sons Tucker and Cooper. ASU baseball is indeed the family business!

Reminds me of another ASU baseball family..."

— Patsey Brock,

Widow of the late Coach Jim Brock

"Tim pours his heart and soul into this program and into coaching. I played beside him for two years and he was one of the most competitive people I've ever met and that characteristic rubs off on people. It is nice to see him back in the Maroon and Gold and to have him back in the Valley."

— Former ASU infielder and

Major League veteran Mike Benjamin

"Tim came to ASU from Scottsdale College as a catcher and second baseman. But his bat was his best attribute. He was always at his best against the top pitchers in the nation. When the game was on the line, I wanted Es at the plate. Tim was my assistant at ASU before leaving to become the head coach at the University of Utah. He had a passion for the game, but he had pure fire for the art of hitting. Es was easy to find after practice. He was always in the batting tunnel working with players. Tim Esmay is an exceptional teacher of hitting."

— Jeff Pentland

MLB Hitting Coach, Seattle Mariners

